



# 2022

This last summer, the City completed the water tower recoating project. The project consisted of stripping and recoating the interior of the tower as well as some spot repairs and recoating of the tower's exterior. The block "DEVILS LAKE" lettering was also updated as part of the project.

# DEVILS LAKE GARBAGE COLLECTION INFORMATION AND PICKUP OPTIONS



If your garbage is picked up in the alley, containers need to be placed in stands within 15 feet of the alley. Due to thawing conditions in the spring, those with alley pickup will have collection on the boulevard during that time. Check the newspaper, radio and Facebook on when to place garbage on the boulevard.

If your garbage is regularly picked up on the boulevard, containers shall be within 15 feet of the curb and moved back to private property after pickup.

There will be no garbage pickup on New Year's Day, Martin Luther King Day, President's Day, Good Friday, Memorial Day, 4<sup>th</sup> of July, Labor Day, Veteran's Day, Thanksgiving Day and Christmas Day.

If your garbage pickup falls on a holiday, pick up will be the following working day.

**OPTION 1:** Purchase special blue City bags and use them to dispose of your garbage. 30 gallon bags can be purchased at Leever's and Wal Mart. 15 gallon bags can be purchased at City Office. Collection is once per week. Place garbage out by 7:00 am on your pickup day.

**OPTION 2:** Choose how many cans per week you need and a sticker is issued for each can to be collected. Sticker(s) must be on the can or in a prominently displayed location (garbage rack, post, fence, etc) so they are visible to the garbage collection personnel. Any garbage that does not fit in your can must be placed in a special blue City bag for collection OR IT WILL NOT BE PICKED UP.

Customers must supply their own garbage cans with a **maximum size of 32 gallons**. All garbage shall be placed in garbage bags before being placed in containers. To comply with OSHA and Workforce Safety & Insurance requirements, and to avoid injuries to our sanitation workers, the maximum allowable weight of container contents is 50 pounds per can. Please make sure cans do not have water standing in them before you place your garbage in the can. Collection is once per week. Place garbage out by 7:00 am on your pickup day.

**OPTION 3:** Commercial accounts can make arrangements for dumpster rental or purchase by calling the Sanitation Department at 662-7624 or City Office at 662-7600, ext 1. Cost for dumpster service is a base charge each month plus an additional charge for each cubic yard of garbage picked up. Dumpster pickup may be as little as once a week or as often as 6 times a week.

**CHECK THE MAP BELOW TO SEE WHICH DAY YOUR GARBAGE IS PICKED UP**

**THURSDAY**

**TUESDAY**

**MONDAY**

**WEDNESDAY**

**THURSDAY**

**FRIDAY**

**REGULAR GARBAGE PICKUP**

**THURSDAY**

**TUESDAY**

**MONDAY**

**WEDNESDAY**

**THURSDAY**

**THURSDAY**

**TUESDAY**

**MONDAY**

**WEDNESDAY**

**THURSDAY**

**THURSDAY**

**TUESDAY**

**MONDAY**

**WEDNESDAY**

**THURSDAY**

REGULAR GARBAGE PICKUP

**THURSDAY**

**TUESDAY**

**MONDAY**

**WEDNESDAY**

**THURSDAY**

REGULAR GARBAGE PICKUP





The City's inert landfill is open year round at 9:00 am and 1:00 pm, Monday-Friday, by appointment. Call 662-7600, ext 1 to make an appointment. A picture ID showing current address is required prior to anyone being allowed to use the landfill.

The landfill is also open from 9:00 am to 1:00 pm on the 2<sup>nd</sup> Saturday of each month during the summer.

The landfill is open for free dumping for city residents with can service from 9:00 am to 1:00 pm on the Saturday prior to the start of the spring and fall special pickup, and Monday-Friday by appointment at 9:00 am and 1:00 pm during the week prior to the start of special pickups.

All landfill hours are dependent on weather conditions.

Acceptable items at the landfill include items such as carpet, toys, mattresses, furniture, construction debris, dried paint cans, tires (extra charge), appliances (\$15 fee if appliance has freon), doors and windows.

Electronic items such as TVs, computer monitors, microwaves, and batteries are NOT acceptable.



### **SPRING AND FALL SPECIAL PICKUPS AVAILABLE TO THOSE WITH RESIDENTIAL ACCOUNTS**

The City provides free pickup of large items to all those who have a residential utility account. Each household is allowed to put out 5 CY of materials (about 2 pickup loads) – anything in excess of 5 CY will be billed to the homeowner.

On the Monday the special pickup starts in each area, items for pickup must be placed out by 7:00 am in the same spot your garbage is collected. The City is not responsible for replacement of any items placed out that were not intended for pick up.

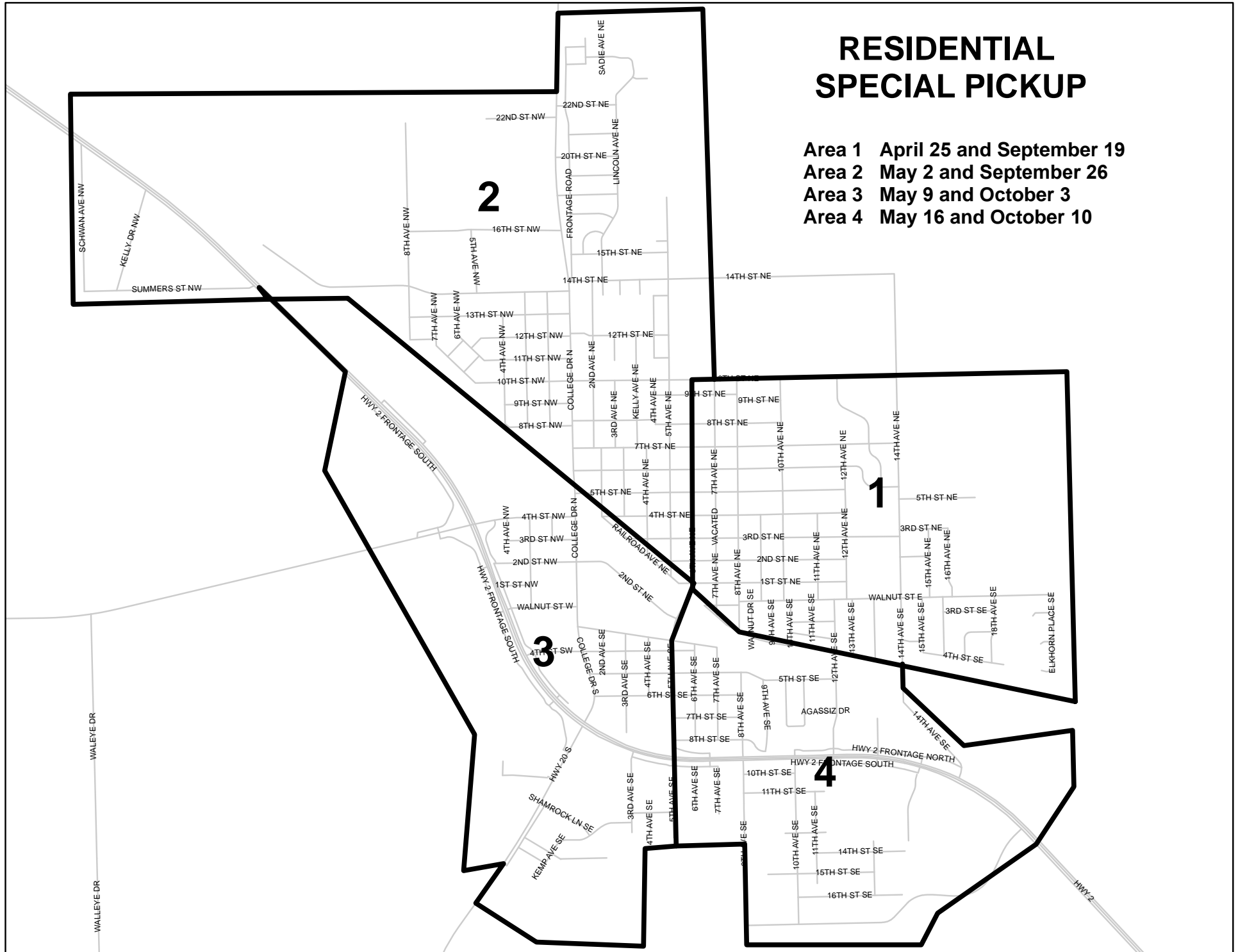
Acceptable items for the special pickup include carpet, toys, mattresses, furniture, construction debris, dried paint cans, tires (extra charge), appliances (\$15 fee if appliance has freon), doors and windows. Please separate glass items so they can be hand loaded and avoid broken glass. Put smaller items in bags or boxes so they don't blow around.

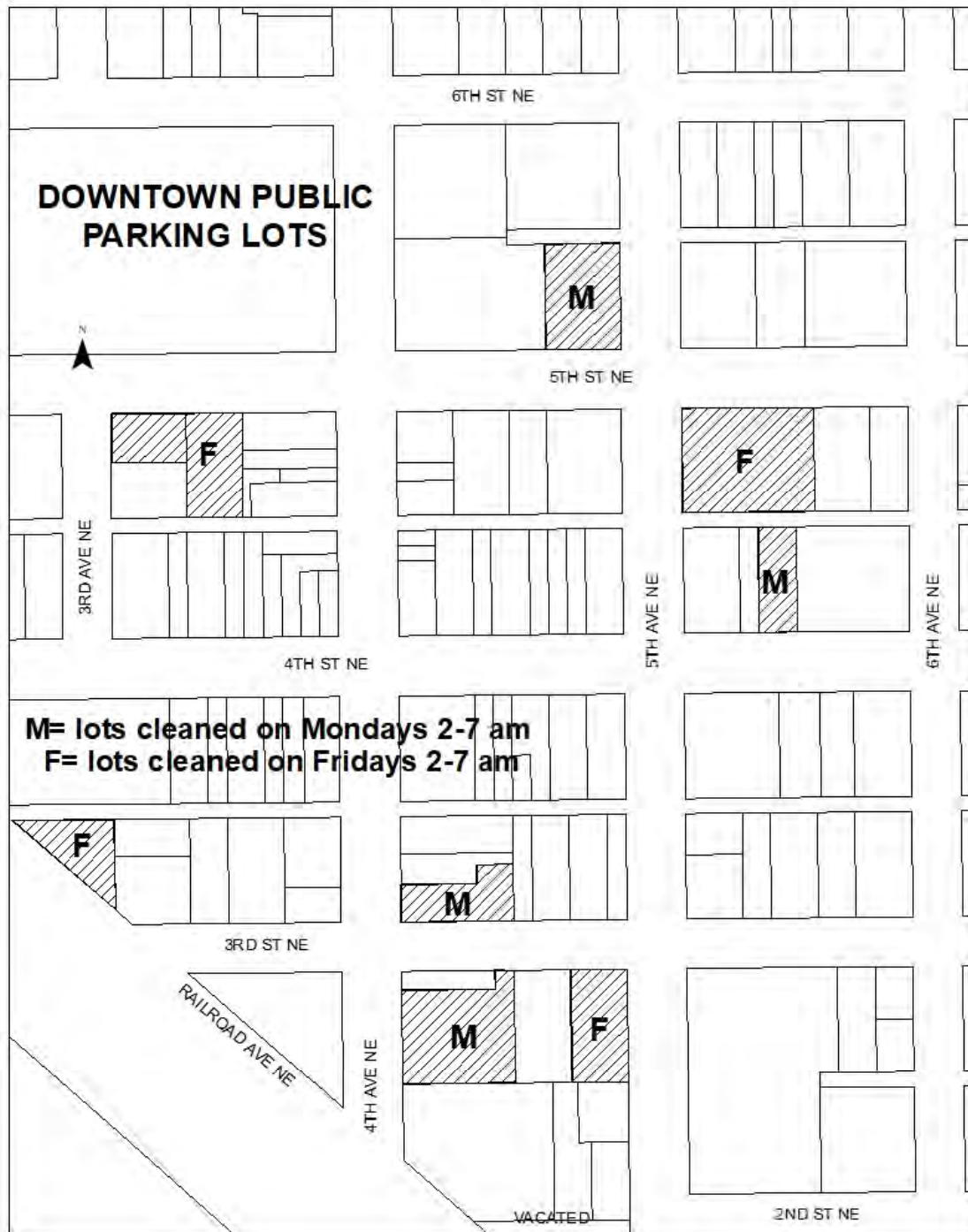
Household garbage, liquids of any kind, TVs, microwaves, computer monitors or batteries are NOT ACCEPTABLE.

**CHECK THE MAP BELOW TO SEE WHEN THE  
SPRING AND FALL SPECIAL PICKUPS ARE  
COMING TO YOUR AREA**

# RESIDENTIAL SPECIAL PICKUP

**Area 1** April 25 and September 19  
**Area 2** May 2 and September 26  
**Area 3** May 9 and October 3  
**Area 4** May 16 and October 10





## DOWNTOWN PUBLIC PARKING LOTS STREET SWEEPING AND SNOW REMOVAL

Public parking lots in the downtown area are scheduled for sweeping or snow removal according to the days shown on the map to the left. To avoid a ticket, do not park in lots on these days:

### ***NO PARKING*** Mondays 2:00 am - 7:00 am:

- Last Hand – 4<sup>th</sup> St NE, West of St Joseph's Church
- Old Journal Lot – 4<sup>th</sup> Ave NE, south of McGarvey Archery
- Town Hall – 5<sup>th</sup> St NE & 5<sup>th</sup> Ave NE, east of Armory
- Ray's Standard Lot – 4<sup>th</sup> Ave NE & 3<sup>rd</sup> St NE, west of Thompson's Glass & Paint

### ***NO PARKING*** Fridays 2:00 am - 7:00 am:

- Chautauqua – 5<sup>th</sup> Ave NE & 5<sup>th</sup> St NE, west of City Center Motel
- VFW – 3<sup>rd</sup> Ave NE, west of VFW Club
- Farmers Union Lot – 5<sup>th</sup> St NE & 3<sup>rd</sup> Ave NE, west of Creative Impressions & north of Farmers Union Insurance
- Firestone – 5<sup>th</sup> Ave NE & 3<sup>rd</sup> St NE, west of Post Office

Sweeping and snow removal on the streets and avenues in the downtown area will normally take place between the hours of 2:00 -7:00 am, except Sundays and holidays. Please do not park on the downtown streets or avenues during those hours or your vehicle may get ticketed.

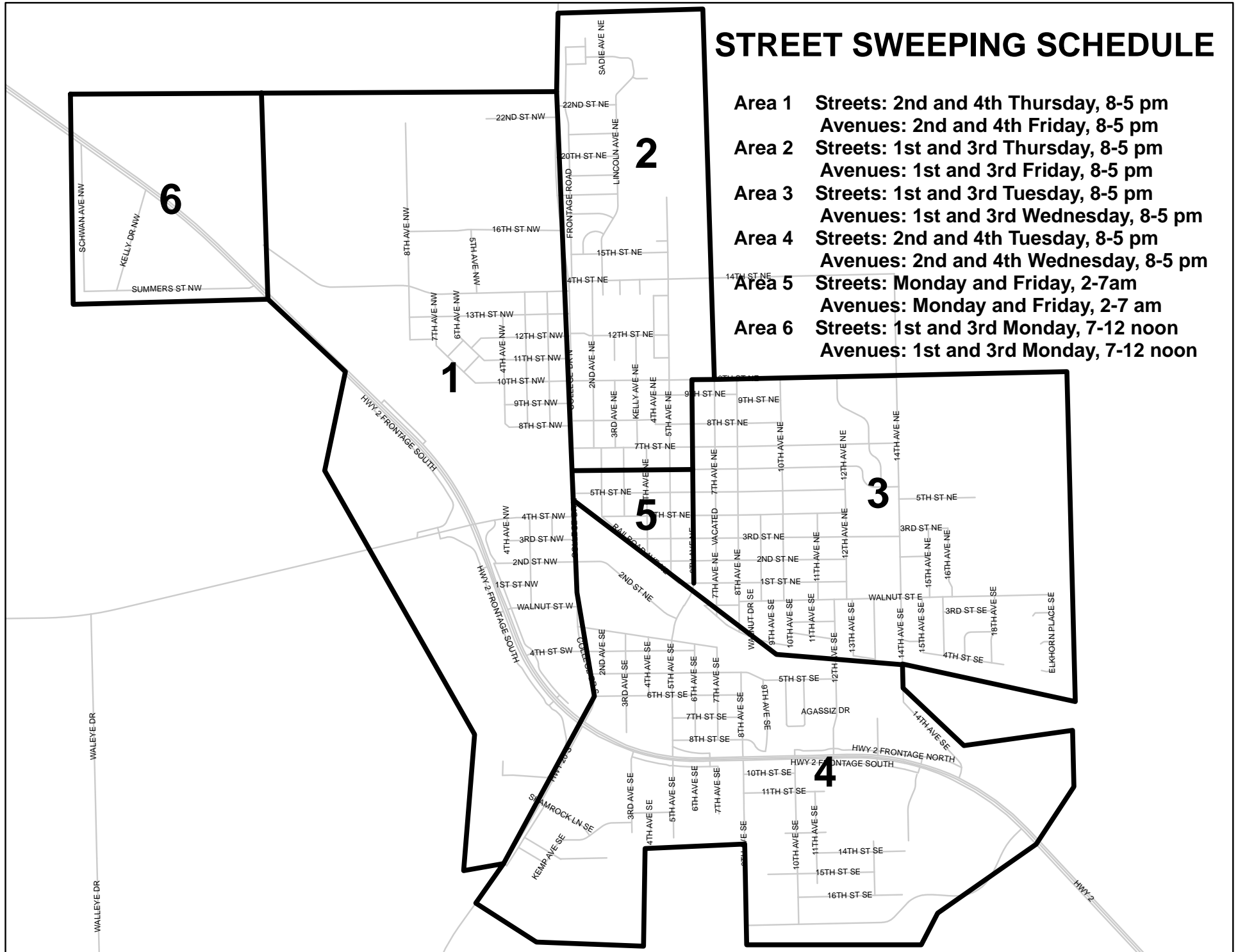
## CITY STREET SWEEPING SCHEDULE

To avoid a ticket and/or towing, move your vehicle from the streets and avenues according to the street sweeping schedule shown on the map below.



# STREET SWEEPING SCHEDULE

- Area 1** Streets: 2nd and 4th Thursday, 8-5 pm  
Avenues: 2nd and 4th Friday, 8-5 pm
- Area 2** Streets: 1st and 3rd Thursday, 8-5 pm  
Avenues: 1st and 3rd Friday, 8-5 pm
- Area 3** Streets: 1st and 3rd Tuesday, 8-5 pm  
Avenues: 1st and 3rd Wednesday, 8-5 pm
- Area 4** Streets: 2nd and 4th Tuesday, 8-5 pm  
Avenues: 2nd and 4th Wednesday, 8-5 pm
- Area 5** Streets: Monday and Friday, 2-7am  
Avenues: Monday and Friday, 2-7 am
- Area 6** Streets: 1st and 3rd Monday, 7-12 noon  
Avenues: 1st and 3rd Monday, 7-12 noon

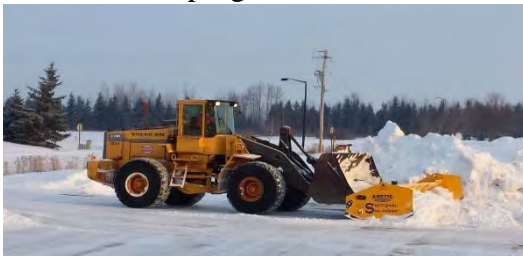


# CITY SNOW REMOVAL OPERATIONS

In general, the City of Devils Lake snow removal operations are done in two modes: Storm Operation Mode and Routine Maintenance Mode.

## STORM OPERATION MODE

- Limited city crews may work during storm to keep priority routes passable
- Full city crews work after storm clearing priority routes and then residential areas
- Downtown area will be cleaned the first night following clearing of priority roads
- When priority roads are open, crews will begin plowing in residential areas, generally in daylight hours due to safety concerns
- If residential streets are impassable, crews will work to open residential streets PRIOR to cleaning downtown
- Alleys cleaned based on garbage pickup routes; downtown cleaned first
- Snow gates are not effective with deep snow and may not be used
- Residents asked to not park on streets/avenues where they will hinder City snow removal efforts
- Motorists asked to limit travel so snow removal can progress



## ROUTINE MAINTENANCE MODE

- Remove compacted snow, widening of roads, scheduled snow removal
- **Residential streets:** no parking 8:00 am-5:00 pm Tue, Thu, Sat
- **Residential avenues:** no parking 8:00 am-5:00 pm Mon, Wed, Fri
- **Downtown district:** no parking 2:00 am-7:00 am except Sundays and holidays
- **Downtown parking lots:**  
NO PARKING Mondays or Friday, 2:00 am- 7:00 am, depending on the lot: A map of parking lot maintenance days is located in the front of this calendar.

## Parking Ticket

- **Ticketing will occur for failure to remove vehicles for snow removal maintenance**

## FIRE HYDRANTS AND MAILBOXES

- Resident's responsibility to remove snow around mailboxes
- Residents are asked to clear snow from fire hydrants in their area
- City crews will work to clear these areas as time allows during maintenance periods

## SIDEWALKS

- Residents are required to clear their sidewalk of snow or ice within 24 hours of a snow event; if not cleared, the City or its contractor may remove the snow and bill the property owner
- Residents should notify the City of uncleared sidewalks so problems can be corrected



## PROPERTY OWNER AND CONTRACTOR SNOW REMOVAL

- All snow removed from sidewalks or driveways in residential areas must be stored on the boulevard, homeowner's property or hauled away
- Residents, business owners and contractors are reminded it is illegal to deposit, place, move or push snow and leave on streets, alleys or highway rights of way within the City
- Violations may result in the City removing snow and billing property owner according to the City's Rates and Fees
- Be courteous and do not push snow onto your neighbor's property or boulevard without their permission







When you see an “**R**” on the days your garbage is picked up, **put your recyclables out for pickup in the same place your garbage is picked up.** If your pickup day falls on a holiday, it will be picked up the following workday. Questions about recycling can be directed to Lake Region Corporation at 662-8681.



Disabled veterans living in their own home in Devils Lake may qualify for a real estate tax credit. If a veteran has 50% or more disability, submits proof of disability rating, a copy of their DD214, and fills out a short application a real estate tax credit may be approved.

An unremarried surviving spouse (if the disabled veteran is deceased) may be eligible for a real estate tax credit equal to the percentage of the disabled veteran’s disability compensation rating.

Call City Office at 662-7600, ext 2, for more information.



Stop in and visit the City’s Lake Region Public Library located at 423 7<sup>th</sup> St NE.

Call 701-662-2220

Hours are:

10:30 am-6:00 pm, Mon, Tue, Wed, Fri

10:30 am -7:00 pm, Thursday

10:30 am – 3:00 pm, Sat

## IS HOMESTEAD CREDIT AN OPTION FOR YOU???

Check to see if you qualify for the homestead real estate tax credit. Are you 65 or older, or disabled, and live in your own home? Do you have assets less than \$500,000? Is your combined annual income less than \$42,000? Do you pay medical expenses out of your own pocket?



If you can answer yes, call City Office at 662-7600, ext 2, to get more information about the Homestead Credit Act to see if you are able to save money on your real estate taxes each year. Applications are available at city office and due February 1 each year.

SUNDAY	MONDAY	TUESDAY	WEDNESDAY	THURSDAY	FRIDAY	SATURDAY
		1 <i>R</i>	2	3	4 <i>R</i>	5
6	7 5:30 p.m. - City Commission Meeting	8 <i>R</i>	9	10 <i>R</i>	11	12
13 Valentine's Day	14 <i>R</i>	15	16 <i>R</i>	17	18 <i>R</i>	19
20	21 President's Day No garbage pickup <b>HOLIDAY</b>	22 <i>R</i> Monday & Tuesday garbage picked up 5:30 p.m. - City Commission Meeting	23	24 <i>R</i>	25	26
27	28	<i>R</i> = Recycling pickup - for example, if your garbage is picked up on Monday, put your recyclables out on each Monday with an "R".				

# February 2022



Like us on Facebook at  
City of Devils Lake-Public Works

# WHAT SHOULD I DO ABOUT.....

## FIRE HYDRANTS

Help take care of the fire hydrants near you.  
**Your life could depend on it!!!!**

Each summer City staff flush hydrants to make sure they are operational.

Each fall hydrants are winterized to prevent freezing.

Take time to clear snow from the hydrant near you. If you are unable to clear the snow, call the Fire Department at 662-3913.



## HAZARDOUS WASTE



Call 701-425-3016 for more information from the ND Department of Agriculture on the annual hazardous waste drop site. The site for Project Safe Send is 1905 Schwan Ave NW and they accept unusable or banned pesticides.

## LEFT OVER PAINT



Paint cans may be put in your regular garbage if cans are empty or left over paint has been mixed with sand or kitty litter.

Spray cans must be empty before placing in garbage can. Spray contents into cardboard box until can is empty.



## CHRISTMAS TREES



Recycle your live Christmas tree by placing in the same place you put your garbage by 7:00 am on the first Monday of January. Tree pickup starts on that Monday regardless of what day your garbage is picked up. Please remove all plastic bags and decorations.



SUNDAY	MONDAY	TUESDAY	WEDNESDAY	THURSDAY	FRIDAY	SATURDAY
		1	<i>R</i> 2	3	<i>R</i> 4	5
6	7  5:30 p.m. - City Commission Meeting	<i>R</i> 8	9	<i>R</i> 10	11	12
13  Daylight savings time begins	<i>R</i> 14	15	<i>R</i> 16	17  St. Patrick's Day	<i>R</i> 18	19
20	21  5:30 p.m. - City Commission Meeting	<i>R</i> 22	23	<i>R</i> 24	25	26
27	<i>R</i> 28	29	<i>R</i> 30	<i>R</i> = Recycling pickup - for example, if your garbage is picked up on Monday, put your recyclables out on each Monday with an "R".		

# March 2022



Like us on Facebook at  
City of Devils Lake-Public Works

# WHAT SHOULD I DO ABOUT.....

## BROKEN SIDEWALKS



UNLESS YOU HAVE FRIENDS AND NEIGHBORS WHO HAVE IMPRESSIVE JUMPING SKILLS, CALL THE CITY ENGINEERING DEPARTMENT AT 662-7600, EXT 2, ABOUT THE BROKEN OR CRACKED SIDEWALK IN FRONT OF YOUR HOUSE.

**YOUR CRACKED OR BROKEN SIDEWALK MAY QUALIFY FOR A 50% MATCH FROM THE CITY FOR REPLACEMENT OF YOUR SIDEWALK.**

## BLOCKING A PUBLIC RIGHT OF WAY

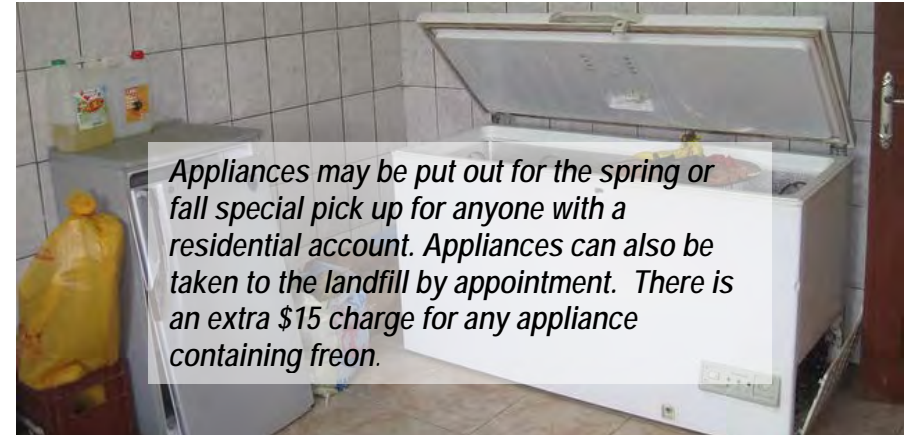


Call the City Engineering office at 662-7600, ext 1, for information on blocking any portion of a public rights of way such as streets, sidewalks, or alleys.

A permit to block a public right of way must be obtained from the Engineering office at least 1 week prior to blocking.

Recycling statistics for 2021 reveal recycling saves 700 million metric tons in CO2 emissions yearly. The reduction of carbon emissions is crucial for fighting climate change. Recycling decreases carbon emissions, which are responsible for global warming, but it also saves energy.

## NON-WORKING APPLIANCES



*Appliances may be put out for the spring or fall special pick up for anyone with a residential account. Appliances can also be taken to the landfill by appointment. There is an extra \$15 charge for any appliance containing freon.*

## GENTLY USED CLOTHING AND FURNITURE

Are you cleaning house and looking for a place to donate gently used clothing or furniture?? Recycle those items by donating to the local thrift stores: St Joseph's Closet at 401 4<sup>th</sup> St NE or Dakota Boys and Girls Ranch at 408 Hwy 2 W. Some of the acceptable items for donation are clothing, furniture, kitchen ware, bedding, home décor, books, tools, yard equipment and much more.



With possible changes in hours, call ahead to check on time when drop offs are accepted.

SUNDAY	MONDAY	TUESDAY	WEDNESDAY	THURSDAY	FRIDAY	SATURDAY
<i>R</i> = Recycling pickup - for example, if your garbage is picked up on Monday, put your recyclables out on each Monday with an "R".					<i>R</i> 1	2
3	4  5:30 p.m. - City Commission Meeting	<i>R</i> 5	6	<i>R</i> 7	8	9
10  Palm Sunday	<i>R</i> 11	12	<i>R</i> 13	14	<i>R</i> 15  Good Friday No garbage pickup No recycle pickup  HOLIDAY	16
17  Easter Sunday	<i>R</i> * 18 Friday & Monday garbage picked up * Friday recycle picked up	<i>R</i> 19  5:30 p.m. - City Commission Meeting	20	<i>R</i> 21	22	23  Landfill open 9 a.m. - 1 p.m.
← Free landfill dumping for city residents by appt. 9am or 1pm →						
24	<i>R</i> 25  SPECIAL PICKUP Area 1 (See map in front)	26	<i>R</i> 27	28	<i>R</i> 29	30

# April 2022



Like us on Facebook at  
City of Devils Lake-Public Works

# WHAT SHOULD I DO ABOUT.....

## MOSQUITO CONTROL

The City uses 3 trucks to spray for mosquitoes when conditions require. Wind speeds can be no greater than 10 mph and temperature must be at least 55°. The City also uses larvicide briquettes and granules at breeding sites to prevent mosquito hatches.



Do your part to control mosquitoes and don't let your yard become a breeding site!! Get rid of items that hold water.

Aerial spraying is done for the 4<sup>th</sup> of July and Labor Day as deemed necessary.

## EXCESS GARBAGE



If your garbage doesn't fit in your can on garbage pickup day, it won't get picked up.

You can get special blue City garbage bags for the garbage that does not fit in your can. Both Leever's and Wal Mart carry 30 gallon bags and 15 gallon bags are available at City Office.

Don't let your garbage be scattered all over the neighborhood.





SUNDAY	MONDAY	TUESDAY	WEDNESDAY	THURSDAY	FRIDAY	SATURDAY
1	2 SPECIAL PICKUP Area 2 (See map in front)  5:30 p.m. - City Commission Meeting	<i>R</i> 3	4	<i>R</i> 5	6	7
8 Mother's Day	<i>R</i> 9 SPECIAL PICKUP Area 3 (See map in front)	10	<i>R</i> 11	12	<i>R</i> 13	14  Landfill open 9 a.m. - 1 p.m.
15	16 SPECIAL PICKUP Area 4 (See map in front)  5:30 p.m. - City Commission Meeting	<i>R</i> 17	18	<i>R</i> 19	20	21
22	<i>R</i> 23	24	<i>R</i> 25	26	<i>R</i> 27	28
29	30 Memorial Day No garbage pickup  HOLIDAY	<i>R</i> 31  Monday & Tuesday garbage pickup	<i>R</i> = Recycling pickup - for example, if your garbage is picked up on Monday, put your recyclables out on each Monday with an "R".			

# May 2022



Like us on Facebook at  
City of Devils Lake-Public Works

# WHAT IS ALLOWED AT THE RECYCLING CENTER??

## TIN & ALUMINUM DROP OFF

**ACCEPTABLE:**  
TIN FOOD CANS, ALUMINUM CANS ONLY

**PREPARATION:**  
FLATTEN CANS TO SAVE SPACE, RINSE CLEAN,  
REMOVE LABELS, DO NOT PUT IN PLASTIC BAGS

**NOT ACCEPTABLE:**  
TIN FOIL

DO NOT REMOVE ITEMS FROM RECYCLING BINS



**\$500.00 FINE FOR MISUSE  
24/7 VIDEO SURVEILLANCE**

## PAPER DROP OFF

**ACCEPTABLE:**  
NEWSPAPER, OFFICE PAPER, SHREDDED PAPER

**PREPARATION:**  
DO NOT PUT IN PLASTIC BAGS

**NOT ACCEPTABLE:**  
GIFT WRAPPING PAPER, WAX COATED PAPER,  
GLOSSY PAPER, HARD COVER BOOKS

DO NOT REMOVE ITEMS FROM RECYCLING BINS



**\$500.00 FINE FOR MISUSE  
24/7 VIDEO SURVEILLANCE**

## GRASS & LEAVES DROP OFF

**ACCEPTABLE:**  
GRASS, LEAVES, GARDEN WASTE

**PREPARATION:**  
PLACE GRASS/LEAVES/GARDEN WASTE  
IN DESIGNATED PILE

**NOT ACCEPTABLE:**  
PLASTIC BAGS OR BOXES

CALL 662-7624 FOR DISPOSAL OPTIONS  
FOR OUT OF TOWN RESIDENTS



**\$500.00 FINE FOR MISUSE  
24/7 VIDEO SURVEILLANCE**

Cameras are in use at the Recycling Center at 205 2<sup>nd</sup> St NE to deter improper use of recycling bins. If you see inappropriate use of bins, please call 662-7600, ext 1 or 351-0206 with information. Callers will remain anonymous.

## TREE BRANCH DROP OFF

**ACCEPTABLE:**  
TREE BRANCHES ONLY

**PREPARATION:**  
CUT BRANCHES INTO SMALL PIECES

**NOT ACCEPTABLE:**  
LUMBER, WOOD SCRAPS, PLASTIC BAGS

CALL 662-7624 FOR DISPOSAL OPTIONS  
FOR OUT OF TOWN RESIDENTS



**\$500.00 FINE FOR MISUSE  
24/7 VIDEO SURVEILLANCE**

## CARDBOARD DROP OFF

**ACCEPTABLE:**  
EMPTY CORRUGATED CARDBOARD,  
FIBER BOARD BOXES, FOOD BOXES,  
GIFT BOXES, SHOE BOXES

**PREPARATION:**  
FLATTEN BOXES TO SAVE SPACE

**NOT ACCEPTABLE:**  
BOXES WITH ANY TYPE OF WASTE  
OR PACKING MATERIAL

TAKING BOXES FOR YOUR OWN USE IS ALLOWED



**\$500.00 FINE FOR MISUSE  
24/7 VIDEO SURVEILLANCE**

## PLASTIC DROP OFF

**ACCEPTABLE:**  
NARROW NECK BOTTLES, MILK JUGS,  
SMALL PLASTIC CONTAINERS

**PREPARATION:**  
RINSE CLEAN, REMOVE LABELS AND COVERS,  
DO NOT PUT IN PLASTIC BAGS

**NOT ACCEPTABLE:**  
PLASTIC BAGS, LARGE CONTAINERS,  
PLASTIC WRAP, TOYS

DO NOT REMOVE ITEMS FROM RECYCLING BINS



**\$500.00 FINE FOR MISUSE  
24/7 VIDEO SURVEILLANCE**

## GLASS DROP OFF

**ACCEPTABLE:**  
CLEAR AND COLORED GLASS  
JARS AND BOTTLES

**PREPARATION:**  
RINSE CLEAN, REMOVE LABELS  
AND COVERS,  
DO NOT PUT IN PLASTIC BAGS

**NOT ACCEPTABLE:**  
WINDOW GLASS, CERAMICS, VASES

DO NOT REMOVE ITEMS FROM RECYCLING BINS



**\$500.00 FINE FOR MISUSE  
24/7 VIDEO SURVEILLANCE**

SUNDAY	MONDAY	TUESDAY	WEDNESDAY	THURSDAY	FRIDAY	SATURDAY
<i>R</i> = Recycling pickup - for example, if your garbage is picked up on Monday, put your recyclables out on each Monday with an "R".			1	<i>R</i> 2	3	4
5	<i>R</i> 6  5:30 p.m. - City Commission Meeting	7	<i>R</i> 8	9	<i>R</i> 10	11  Landfill Open 9 a.m. - 1 p.m.
12	13	<i>R</i> 14	15	<i>R</i> 16	17	18
19	<i>R</i> 20  5:30 p.m. - City Commission Meeting	21	<i>R</i> 22	23	<i>R</i> 24	25
Father's Day						
26	27	<i>R</i> 28	29	<i>R</i> 30		

# June 2022



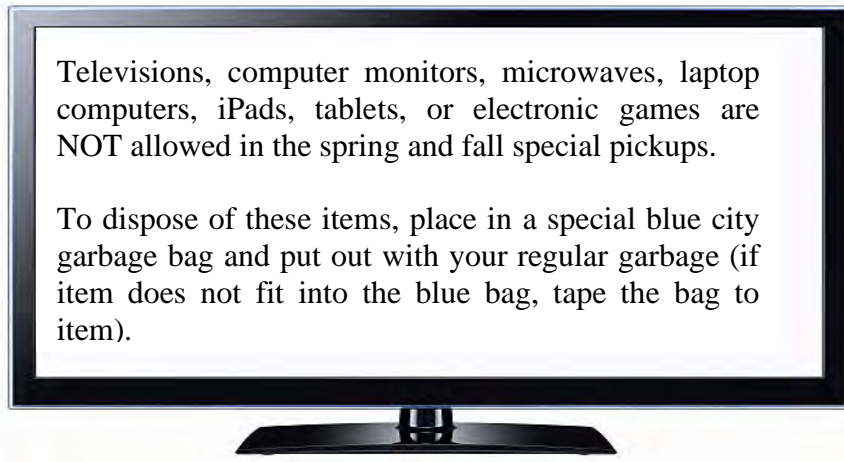
Like us on Facebook at  
City of Devils Lake-Public Works

# WHAT SHOULD I DO ABOUT.....

## TVs, MICROWAVES, MONITORS

Televisions, computer monitors, microwaves, laptop computers, iPads, tablets, or electronic games are NOT allowed in the spring and fall special pickups.

To dispose of these items, place in a special blue city garbage bag and put out with your regular garbage (if item does not fit into the blue bag, tape the bag to item).



## BUILDING PERMITS

**CALL THE CITY BUILDING DEPARTMENT AT  
662-7600, EXT 2, FOR INSPECTIONS  
OR TO SEE WHETHER YOU NEED A PERMIT**

**BUILDING PERMITS NEEDED FOR**

Fences or decks	Lawn shed over 120 SF
Demolition	Structural changes/remodeling
Siding or egress window	New construction or additions



## LIGHT BULBS

Household amounts of light bulbs may be put in your regular garbage, but please place in a container to prevent injury from broken glass.

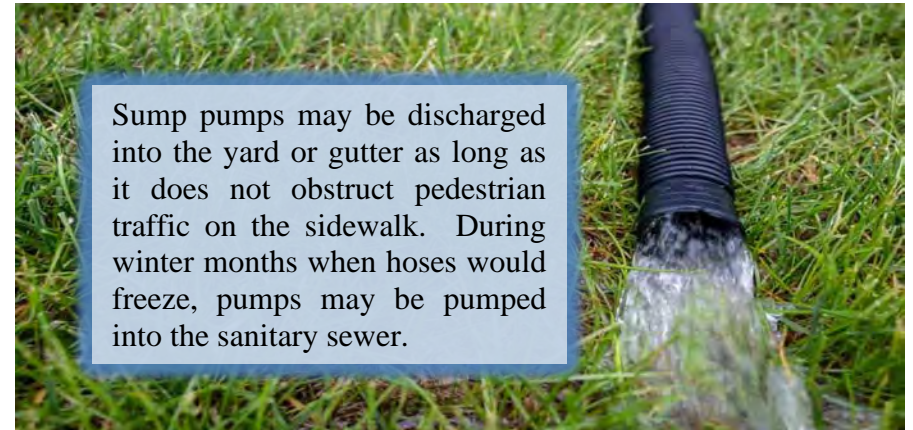
### **PROTECT YOURSELF AND OUR SANITATION WORKERS FROM BROKEN GLASS**

If you have large amounts of light bulbs to dispose of, please contact the Sanitation Department at 662-7624 to make arrangements for disposal.



## SUMP PUMPS

Sump pumps may be discharged into the yard or gutter as long as it does not obstruct pedestrian traffic on the sidewalk. During winter months when hoses would freeze, pumps may be pumped into the sanitary sewer.





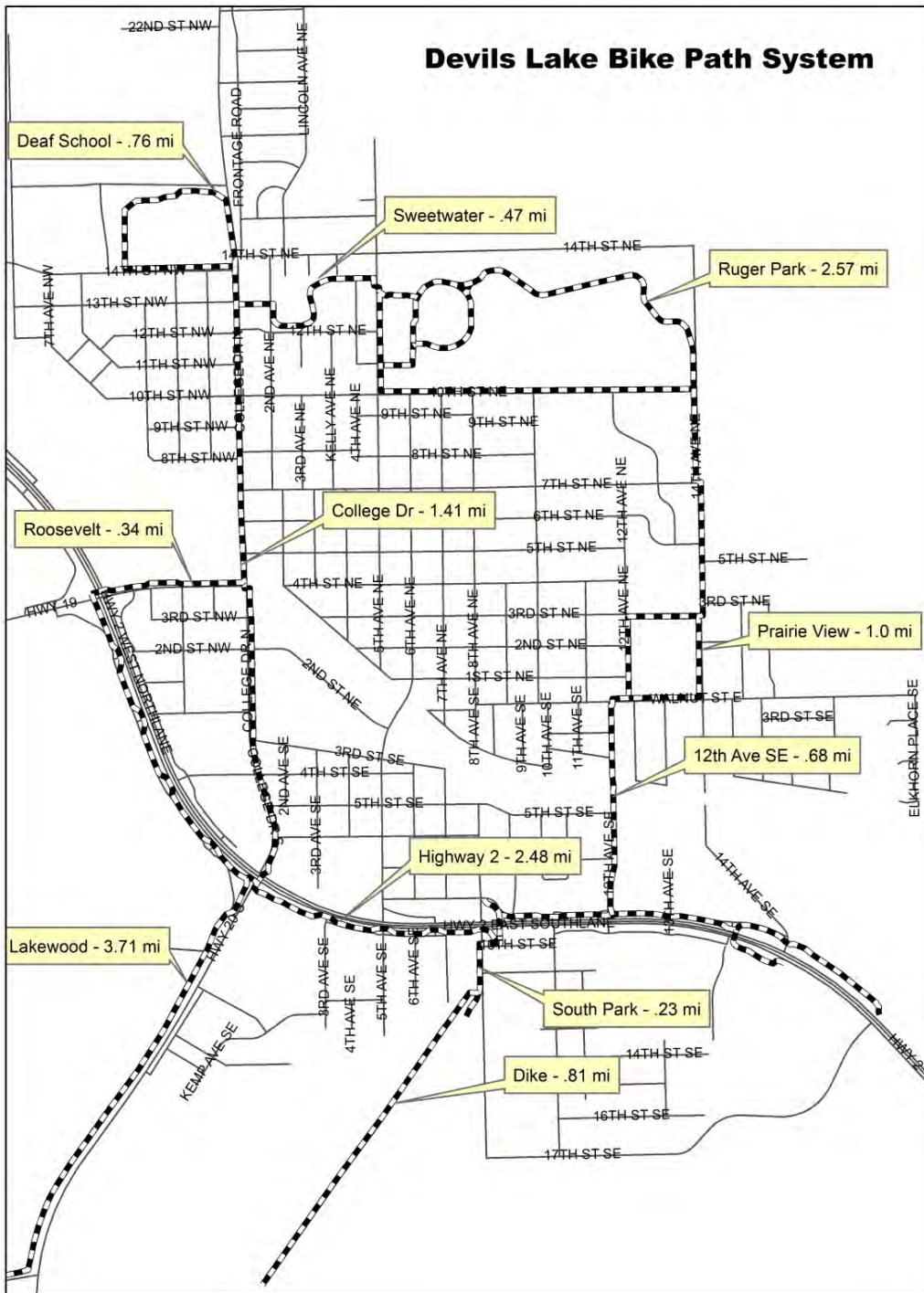
SUNDAY	MONDAY	TUESDAY	WEDNESDAY	THURSDAY	FRIDAY	SATURDAY
<i>R</i> = Recycling pickup - for example, if your garbage is picked up on Monday, put your recyclables out on each Monday with an "R".					1	2
3	4 <b>Independence Day</b>  No garbage pickup No recycle pickup  <b>HOLIDAY</b>	<i>R</i> * 5 Monday & Tuesday garbage picked up  * Monday Recycle pickup  5:30 p.m. - City Commission Meeting	<i>R</i> 6	7	<i>R</i> 8	9   Landfill Open 9 a.m. - 1 p.m.
10	11	<i>R</i> 12	13	<i>R</i> 14	15	16
17	<i>R</i> 18   5:30 p.m. - City Commission Meeting	19	<i>R</i> 20	21	<i>R</i> 22	23
24  	25	<i>R</i> 26	27	<i>R</i> 28	29	30
31						

# July 2022



Like us on Facebook at  
City of Devils Lake-Public Works

## Devils Lake Bike Path System



## CITY PHONE NUMBERS....

Accounting	662-7600, ext 1
Addressing	662-7600, ext 2
Airport	662-5833
Assessing	662-7600, ext 2
Auditing	662-7600, ext 1
Building inspections	662-7600, ext 2
Building permits	662-7600, ext 2
Cemetery	662-7600, ext 1
City Commission	662-7600, ext 1
Engineering	662-7600, ext 2
Fire Department	662-3913
Garbage collection	662-7600, ext 1
Lake Region Ambulance	662-8832
Landfill appointment	662-7600, ext 1
Law Enforcement	662-0700
Library	662-2220
Mapping	662-7600, ext 2
Planning/zoning	662-7600, ext 2
Police Department	662-0712
Property information	662-7600, ext 2
Property value	662-7600, ext 2
Sewer service	662-7623
Sidewalks	662-7600, ext 2
Snow removal	662-7605
Special assessments	662-7600, ext 1
Street repair	662-7605
Subdivisions	662-7600, ext 2
Utility billing	662-7600, ext 1
Water service	662-7623

SUNDAY	MONDAY	TUESDAY	WEDNESDAY	THURSDAY	FRIDAY	SATURDAY
	<i>R</i> 1  5:30 p.m. - City Commission Meeting	2	<i>R</i> 3	4	<i>R</i> 5	6
7	8	<i>R</i> 9	10	<i>R</i> 11	12	13  Landfill Open 9 a.m. - 1 p.m.
14	<i>R</i> 15  5:30 p.m. - City Commission Meeting	16	<i>R</i> 17	18	<i>R</i> 19	20
21	22	<i>R</i> 23	24	<i>R</i> 25	26	27
28	<i>R</i> 29	30	<i>R</i> 31	<i>R</i> = Recycling pickup - for example, if your garbage is picked up on Monday, put your recyclables out on each Monday with an "R".		

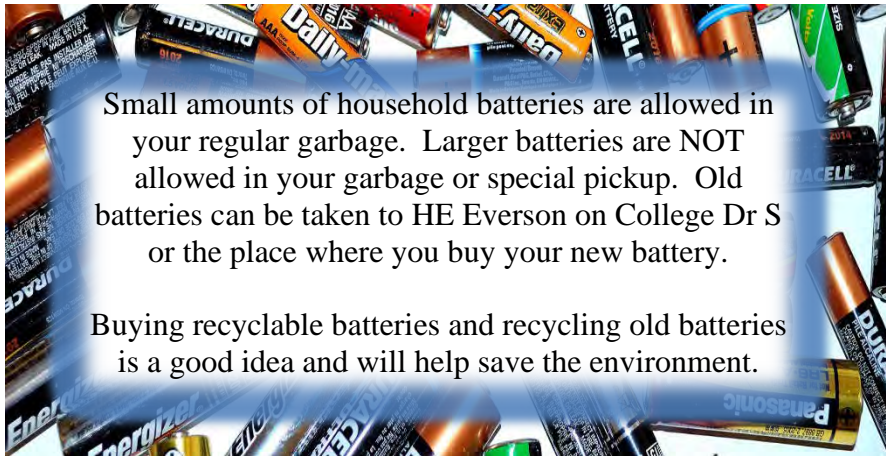
# August 2022



Like us on Facebook at  
City of Devils Lake-Public Works

# WHAT SHOULD I DO ABOUT.....

## DEAD BATTERIES



Small amounts of household batteries are allowed in your regular garbage. Larger batteries are NOT allowed in your garbage or special pickup. Old batteries can be taken to HE Everson on College Dr S or the place where you buy your new battery.

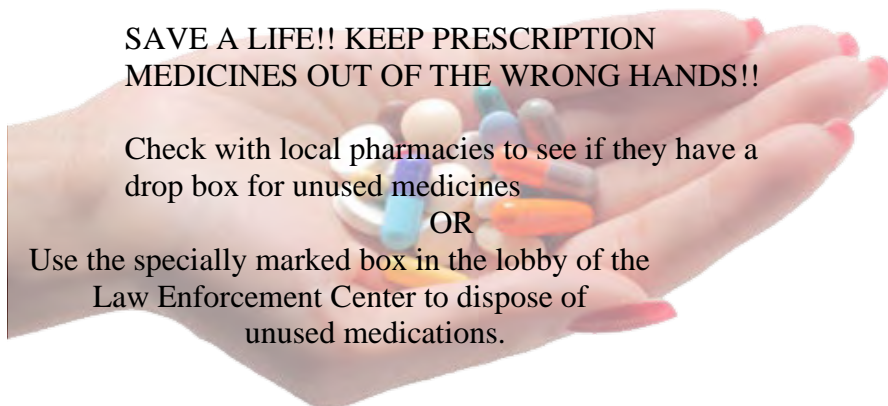
Buying recyclable batteries and recycling old batteries is a good idea and will help save the environment.

## USED OIL



Dispose of used oil in the specially marked tank inside the fenced area at the Recycling Center at 205 2<sup>nd</sup> St NE between the hours of 6:00 am-2:00 pm, Monday-Friday.

## UNUSED PRESCRIPTIONS



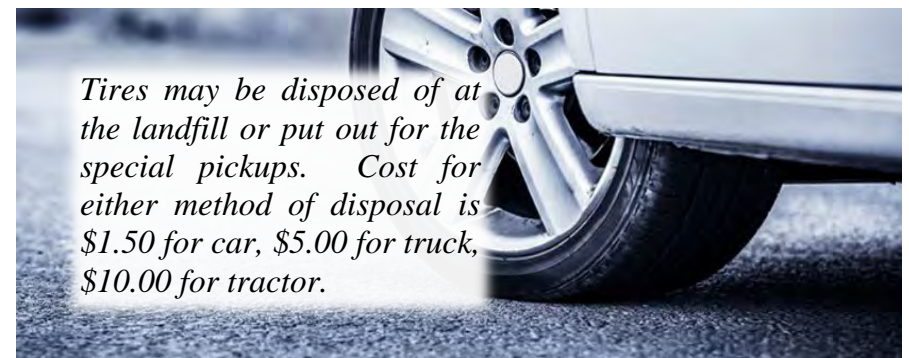
**SAVE A LIFE!! KEEP PRESCRIPTION MEDICINES OUT OF THE WRONG HANDS!!**

Check with local pharmacies to see if they have a drop box for unused medicines

OR

Use the specially marked box in the lobby of the Law Enforcement Center to dispose of unused medications.

## WORN OUT TIRES



*Tires may be disposed of at the landfill or put out for the special pickups. Cost for either method of disposal is \$1.50 for car, \$5.00 for truck, \$10.00 for tractor.*



SUNDAY	MONDAY	TUESDAY	WEDNESDAY	THURSDAY	FRIDAY	SATURDAY
<i>R</i> = Recycling pickup - for example, if your garbage is picked up on Monday, put your recyclables out on each Monday with an "R".				1	<i>R</i> 2	3
4	5 Labor Day No garbage pickup HOLIDAY	<i>R</i> 6 Monday & Tuesday garbage picked up 5:30 p.m. - City Commission Meeting	7	<i>R</i> 8	9	10 Landfill open 9 a.m. - 1 p.m.
11	<i>R</i> 12	13	<i>R</i> 14	15	<i>R</i> 16	17 Landfill open 9 a.m. - 1 p.m.
<div> <div>←</div> <div>Free landfill dumping for city residents by appt. 9am or 1pm</div> <div>→</div> </div>						
18	19 SPECIAL PICKUP Area 1 (See map in front) 5:30 p.m. - City Commission Meeting	<i>R</i> 20	21	<i>R</i> 22	23	24
25	<i>R</i> 26 SPECIAL PICKUP Area 2 (See map in front)	27	<i>R</i> 28	29	<i>R</i> 30	

# September 2022



Like us on Facebook at  
City of Devils Lake-Public Works

# WHAT SHOULD I DO ABOUT.....

## LOCATING A CEMETERY SPACE

Devils Lake City Office has records of most burials in the City Cemetery. Those records are open to the public for review during regular working hours.

Cemetery spaces are also for sale at City Office during regular working hours.

Call 662-7600, ext 1, for more information.

## PLANTING TREES



The Fire Department provides \$125 vouchers to be used toward the purchase of trees from a local greenhouse for anyone who is willing to plant a tree on the boulevard and take care of it.

The Fire Department has a list of trees that are permitted on boulevards.

Please keep your boulevard and alley trees trimmed throughout the season!!!






## DEER CARCASSES

A specially marked dumpster for deer carcasses is located at the Recycling Center at 205 2<sup>nd</sup> St NE beginning on November 1 of each year.



## PREVENTING FROZEN PIPES

### PREVENT FROZEN PIPES

 <p><b>INSULATE</b> Attics, basements and crawl spaces should be insulated.</p>	 <p><b>SEAL</b> Seal any cracks or openings around windows and doors.</p>	 <p><b>HEAT</b> Keep the heat on, even if you will be away from home.</p>	 <p><b>LET IT DRIP</b> If pipes are exposed to cold, keep water running at a trickle.</p>	 <p><b>OPEN CABINETS</b> For plumbing on exterior walls, keep cabinet doors open.</p>
--	--	--	--	--

## HAULING SNOW FOR THE CITY

Each winter the City hires contractors with trucks to haul snow that accumulates on City streets. Anyone interested in hauling snow can contact Street Supervisor LeRoy Shereck at 662-7605.



SUNDAY	MONDAY	TUESDAY	WEDNESDAY	THURSDAY	FRIDAY	SATURDAY
<i>R</i> = Recycling pickup - for example, if your garbage is picked up on Monday, put your recyclables out on each Monday with an "R".						1
2	3 SPECIAL PICKUP Area 3 (See map in front) 5:30 p.m. - City Commission Meeting	<i>R</i> 4	5	<i>R</i> 6	7	8  Landfill open 9 a.m. - 1 p.m.
9	<i>R</i> 10 SPECIAL PICKUP Area 4 (See map in front)	11	<i>R</i> 12	13	<i>R</i> 14	15
16	17 5:30 p.m. - City Commission Meeting	<i>R</i> 18	19	<i>R</i> 20	21	22
23	<i>R</i> 24 Halloween 31	25	<i>R</i> 26	27	<i>R</i> 28	29
30						

# October 2022



Like us on Facebook at  
City of Devils Lake-Public Works



Grease is your drain's biggest enemy!!! Pouring any kind of grease down your drain can result in an expensive repair.

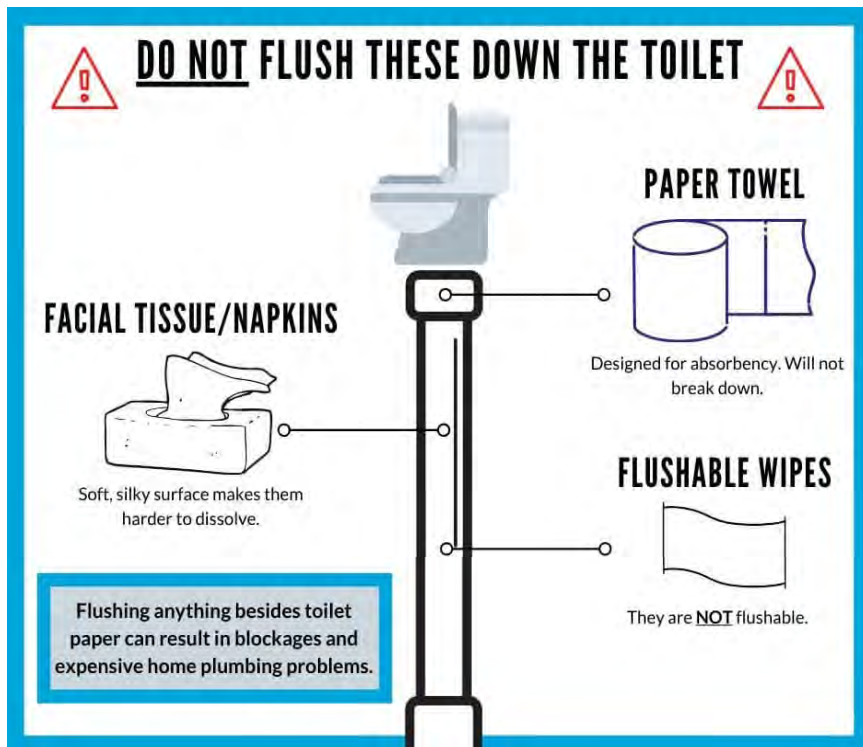
Grease can clog your sewer, your neighbor's sewer, and the City's sewer main. Cool and solidify grease and then throw in the garbage.



Enjoy the convenience of having your utility bill automatically taken out of your checking or savings account each month.

# AUTOPAY

CALL CITY OFFICE AT 662-7600, EXT 1, TO MAKE ARRANGEMENTS FOR UTILITY BILL AUTOPAY.



## PAYING BILLS ONLINE

Credit cards are accepted for payments of fines, landfill bills, cemetery expenses, sidewalk replacement costs, real estate taxes, building permits, and other City bills. Credit card payments can be taken in person or over the phone.



2.5 million plastic bottles are thrown away every hour in America.

SUNDAY	MONDAY	TUESDAY	WEDNESDAY	THURSDAY	FRIDAY	SATURDAY
		<i>R</i> 1	2	<i>R</i> 3	4	5
6  Daylight savings time ends	<i>R</i> 7  5:30 p.m. - City Commission Meeting	8	<i>R</i> 9	10	11  Veteran's Day No garbage pickup No recycle pickup <b>HOLIDAY</b>	12
13	<i>R</i> * 14  Friday & Monday garbage picked up  Friday recycle picked up	<i>R</i> 15	16	<i>R</i> 17	18	19
20	<i>R</i> 21  5:30 p.m. - City Commission Meeting	22	<i>R</i> 23	24  Thanksgiving Day  No garbage pickup <b>HOLIDAY</b>	<i>R</i> 25  Thursday & Friday garbage picked up	26
27	28	29	30	<i>R</i> = Recycling pickup - for example, if your garbage is picked up on Monday, put your recyclables out on each Monday with an "R".		

# November 2022



Like us on Facebook at  
City of Devils Lake-Public Works



# CHRISTMAS RECYCLING



Your Christmas tree can be recycled by placing out with your regular garbage the 2<sup>nd</sup> week of January.

Gift wrap is not recyclable and must go in with regular garbage.



Greeting cards and envelopes can be recycled with your newspaper.

Gift boxes can be recycled with corrugated cardboard.

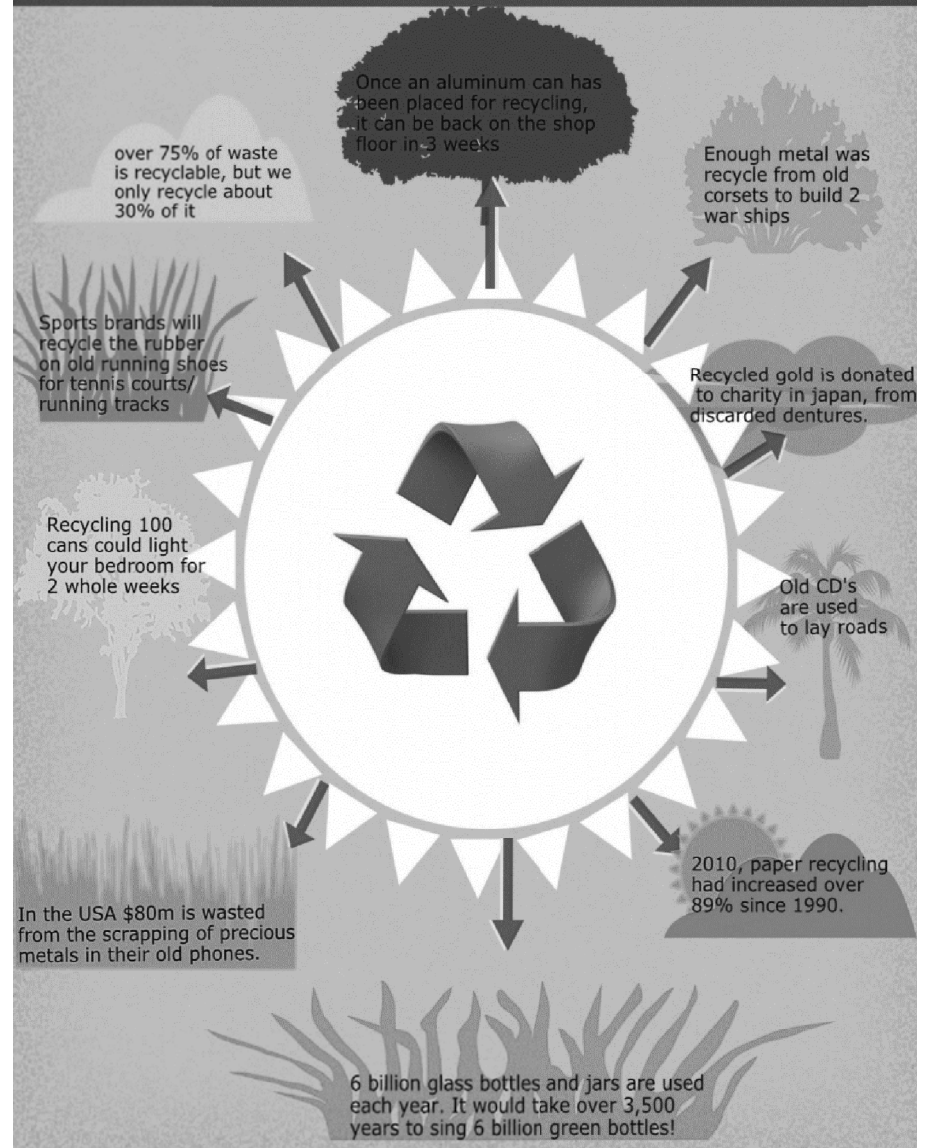


Ugly Christmas sweaters can be recycled at the thrift store.

When making dinner, remember tin cans can be recycled with tin/aluminum; food boxes can be recycled with corrugated cardboard; narrow neck bottles can be recycled with plastic; glass bottles or jars can be recycled with glass.



## 10 Amazing Facts About Recycling



SUNDAY	MONDAY	TUESDAY	WEDNESDAY	THURSDAY	FRIDAY	SATURDAY
<i>R</i> = Recycling pickup - for example, if your garbage is picked up on Monday, put your recyclables out on each Monday with an "R".				<i>R</i> 1	2	3
4	<i>R</i> 5  5:30 p.m. - City Commission Meeting	6	<i>R</i> 7	8	<i>R</i> 9	10
11	12	<i>R</i> 13	14	<i>R</i> 15	16	17
18	<i>R</i> 19  5:30 p.m. - City Commission Meeting	20	<i>R</i> 21	22	23  No recycle pickup	24  Christmas Eve
25  Christmas Day	26  No garbage pickup  HOLIDAY	<i>R</i> * 27  * Friday & Tuesday recycle picked up Monday & Tuesday garbage picked up	28	<i>R</i> 29	30	31  New Year's Eve  HOLIDAY

# December 2022



Like us on Facebook at  
City of Devils Lake-Public Works



Go to the City's web page at [www.dvlnd.com](http://www.dvlnd.com)

The City's web page contains a wide variety of information regarding Board Members of city organizations, city services provided, fees and rates, job information and much more.

You will also find the following and more:

- ❖ Contact phone numbers for City departments
- ❖ Employment applications and job openings
- ❖ City street, bike path and zoning maps
- ❖ Cemetery information
- ❖ City Code of Ordinances
- ❖ Zoning regulations
- ❖ Subdivision regulations
- ❖ Street sweeping and snow removal information
- ❖ Permit applications
- ❖ Link to Ramsey County parcel viewer
- ❖ City Commission agendas and minutes
- ❖ Garbage and recycling information
- ❖ Link to ND road report and radar

The Recycling/Information City calendar has been printed and provided to City residents at no charge for nearly 30 years.

In this world of most everything being found online, the same holds true with the City's calendar. The calendar is located on the City's home page in an effort to make it convenient for anyone looking online for all the information that is provided in the calendar.

For those who prefer to hold a paper calendar in their hands, we also provide that. The same information is provided in the paper calendar as online.

If you remember, the calendar was at one time mailed as an insert to the newspaper. With a reduced newspaper circulation, the decision was made to distribute the calendar by making it available at City Office at 423 6<sup>th</sup> St NE and the Recycling Center at 205 2<sup>nd</sup> St NE.

We are looking for your opinion on the calendar and the information contained in it. Do you have ideas for information that needs to be included? Do you have comments on the method of calendar distribution?

If you wish, please take the time to provide your thoughts below and return to City Office, or call 662-7600, ext 2.

---

---

---

---

---

---

---

---

---

---



Like us on Facebook at City of Devils Lake-Public Works. Stay up to date on City projects, street closings, snow removal, road construction, water outages and more!!