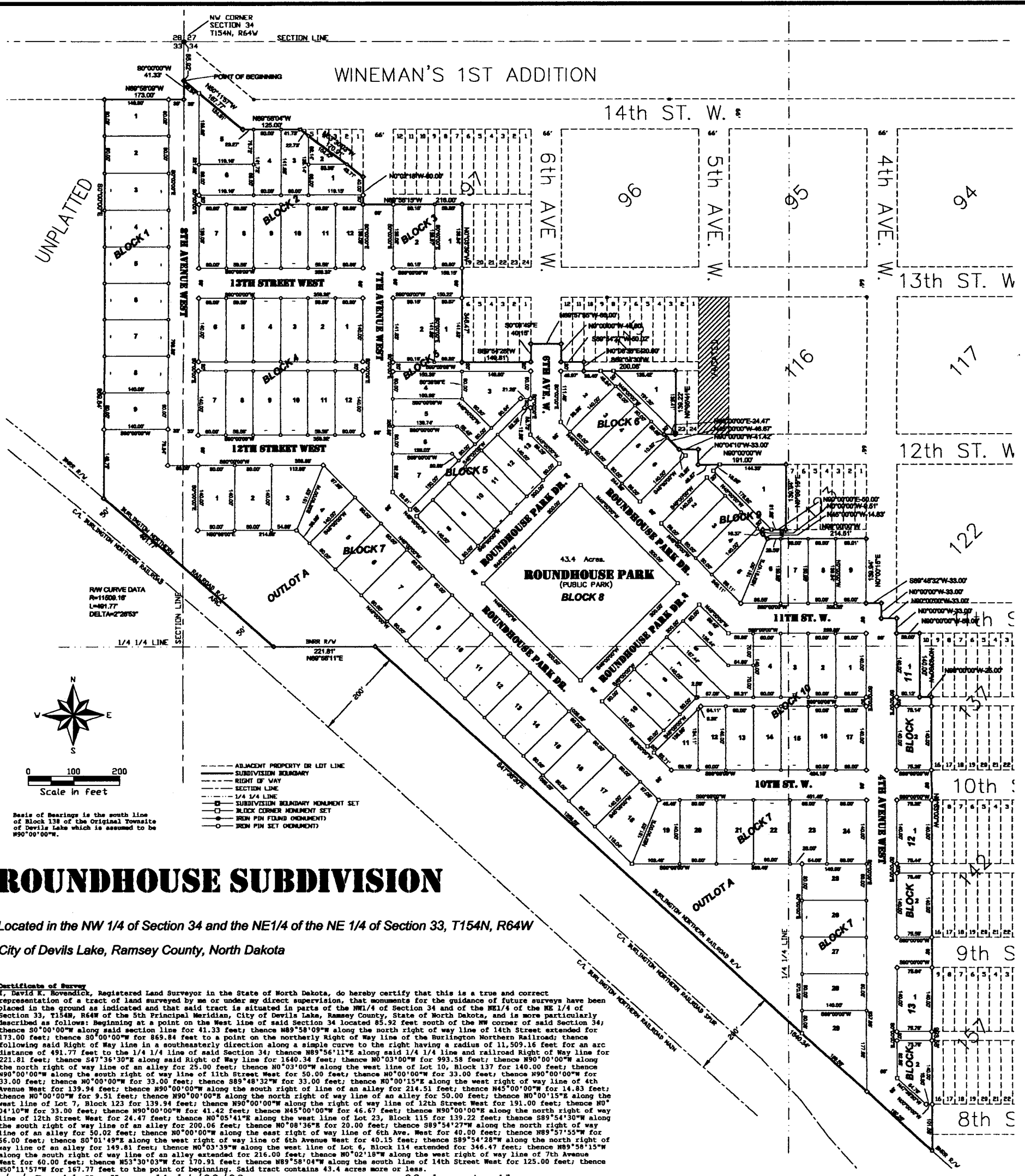


WINEMAN'S 1ST ADDITION



# ROUNDHOUSE SUBDIVISION

Located in the NW 1/4 of Section 34 and the NE 1/4 of the NE 1/4 of Section 33, T154N, R64W  
 City of Devils Lake, Ramsey County, North Dakota

**Certificate of Survey**  
 I, David K. Hovendick, Registered Land Surveyor in the State of North Dakota, do hereby certify that this is a true and correct representation of a tract of land surveyed by me or under my direct supervision, that monuments for the guidance of future surveys have been placed in the ground as indicated and that said tract is situated in parts of the NW 1/4 of Section 34 and of the NE 1/4 of the NE 1/4 of Section 33, T154N, R64W of the 5th Principal Meridian, City of Devils Lake, Ramsey County, State of North Dakota, and is more particularly described as follows: Beginning at a point on the West line of said Section 34 located 85.92 feet south of the NW corner of said Section 34; thence S0°00'00"W along said section line for 41.33 feet; thence N89°58'09"W along the north right of way line of 14th Street extended for 173.00 feet; thence S0°00'00"W for 869.84 feet to a point on the northerly Right of Way line of the Burlington Northern Railroad; thence following said Right of Way line in a southeasterly direction along a simple curve to the right having a radius of 11,509.16 feet for an arc distance of 491.77 feet to the 1/4 1/4 line of said Section 34; thence N89°56'11"E along said 1/4 1/4 line and railroad Right of Way line for 221.81 feet; thence S47°36'30"W along said Right of Way line for 1440.34 feet; thence N0°03'00"W for 993.58 feet; thence N90°00'00"W along the north right of way line of an alley for 25.00 feet; thence N0°03'00"W along the west line of Lot 10, Block 137 for 140.00 feet; thence N90°00'00"W along the south right of way line of 11th Street West for 50.00 feet; thence N0°00'00"W for 33.00 feet; thence N90°00'00"W for 33.00 feet; thence N0°00'00"W for 33.00 feet; thence S89°48'32"W for 33.00 feet; thence N0°00'15"E along the west right of way line of 4th Avenue West for 139.94 feet; thence N90°00'00"W along the south right of way line of an alley for 214.51 feet; thence N45°00'00"W for 14.83 feet; thence N0°00'00"W for 9.51 feet; thence N90°00'00"W along the north right of way line of an alley for 50.00 feet; thence N0°00'15"E along the west line of Lot 7, Block 123 for 139.94 feet; thence N90°00'00"W along the right of way line of 12th Street West for 191.00 feet; thence N0°04'10"W for 33.00 feet; thence N90°00'00"W for 41.42 feet; thence N45°00'00"W for 46.67 feet; thence N90°00'00"E along the north right of way line of 12th Street West for 24.47 feet; thence N0°05'41"E along the west line of Lot 23, Block 115 for 139.22 feet; thence S89°54'30"W along the south right of way line of an alley for 200.05 feet; thence N0°08'36"E for 20.00 feet; thence S89°54'27"W along the north right of way line of an alley for 50.02 feet; thence N0°00'00"W along the east right of way line of 6th Ave. West for 40.00 feet; thence N89°57'55"W for 66.00 feet; thence S0°01'49"E along the west right of way line of 6th Avenue West for 40.15 feet; thence S89°54'28"W along the north right of way line of an alley for 149.81 feet; thence N0°03'39"W along the west line of Lot 6, Block 114 extended for 346.47 feet; thence N89°58'15"W along the south right of way line of an alley extended for 216.00 feet; thence N0°02'18"W along the west right of way line of 7th Avenue West for 60.00 feet; thence N53°30'03"W for 170.91 feet; thence N89°58'04"W along the south line of 14th Street West for 125.00 feet; thence N50°11'57"W for 167.77 feet to the point of beginning. Said tract contains 43.4 acres more or less.

/s/ David K. Hovendick 4/22/99  
 David K. Hovendick Date ND Reg. No. 3612  
 State of North Dakota )  
 County of Ramsey ) SS (Sealed)  
 /s/ Neil Wilson, Notary Public  
 Ramsey County, North Dakota (sealed)  
 State of North Dakota )  
 County of Ramsey ) SS

**Dedication and Approval**  
 I the undersigned, representing the City of Devils Lake, do hereby certify that I am Fred Bott, President of the Devils Lake City Commission, and that I have caused said tract to be surveyed and subdivided into lots and blocks as shown on the affixed plat and certificate of David K. Hovendick, Registered Land Surveyor. I hereby declare that said subdivision shall be known as Roundhouse Subdivision and hereby dedicate all streets as shown on said plat to the public forever.

This plat of Roundhouse Subdivision is hereby approved this 7th day of June A.D., 1999.  
 /s/ Fred Bott  
 Fred Bott, President  
 Devils Lake City Commission  
 State of North Dakota )  
 County of Ramsey ) SS

On this 7th day of June, 1999 A.D. before me, a Notary Public for said county and state, personally appeared Fred Bott, known to me to be the person described herein and who executed the foregoing instrument and acknowledged to me that he executed the same in the name of the City of Devils Lake as his free act and deed.  
 /s/ Helen Carlson  
 Notary Public  
 Ramsey County, North Dakota  
 My commission expires: 1-22-04 (Sealed)

**Planning and Zoning**  
 This plat of Roundhouse Subdivision, situated in the NW 1/4 of Section 34 and the NE 1/4 of the NE 1/4 of Section 33, T154N, R64W, Ramsey County, North Dakota, is hereby approved this 27th day of May, 1999 A.D.  
 /s/ Larry Liere /s/ Helen Carlson  
 Larry Liere Helen Carlson  
 President Secretary  
 Planning & Zoning Commission Planning & Zoning Commission  
 State of North Dakota )  
 County of Ramsey ) SS

On this 27th day of May, 1999 A.D. before me, a Notary Public for said county and state, personally appeared Larry Liere and Helen Carlson, persons described herein and who executed the within instrument and acknowledged to me that they executed the same in the name of the City of Devils Lake, North Dakota.  
 /s/ Margie A Austin  
 Notary Public  
 Ramsey County, North Dakota 2-20-04 (Sealed)  
 My commission expires:

State of North Dakota )  
 County of Ramsey ) SS  
 I hereby certify that Ramsey County, North Dakota taxes and special assessments are paid and transfers accepted this 10th day of June, 1999 A.D.  
 /s/ Byrdia Spidahl  
 Byrdia Spidahl, Ramsey County Auditor  
 Deputy (Sealed)

State of North Dakota )  
 County of Ramsey ) SS  
 I hereby certify that this instrument was filed in this office of record on this 10th day of June, 1999 A.D. at 4:20 o'clock P.M. and was filed as document number 218521-309  
 /s/ Carol Bertsch Filed in Plat Cab 2 Slide 309  
 Carol Bertsch, Ramsey County Register of Deeds (Sealed)

Block	Lot	Area (SF)	Block	Lot	Area (SF)	Block	Lot	Area (SF)	Block	Lot	Area (SF)	Block	Lot	Area (SF)																																																																																																																																																																																																																																																																																																																																																																																																																																																																																																																																																																																																																																																																																																																																																																																																																																																																																																																																																																																																																																																																																																																															
Block 1	1	11,207.8	Block 4	1	8,400.0	Block 6	1	9,168.9	Block 7	20	11,200.0	Block 10	5	5,494.5																																																																																																																																																																																																																																																																																																																																																																																																																																																																																																																																																																																																																																																																																																																																																																																																																																																																																																																																																																																																																																																																																																																															
	2	11,200.0		3	11,200.0		4	11,200.0		5	11,200.0		6	8,400.0	7	11,200.0	8	8,400.0	9	11,200.0	10	11,200.0	21	10,122.0	22	11,200.0	23	8,125.2	11	11,200.0	24	7,000.0	25	11,200.0	26	7,000.0	12	11,200.0	27	8,400.0	28	11,200.0	29	11,200.0	30	7,000.0	13	11,200.0	28	8,400.0	29	11,200.0	30	7,000.0	1	10,553.2	14	11,200.0	29	8,400.0	30	7,840.0	1	11,200.0	2	10,528.8	15	11,200.0	30	8,400.0	1	11,200.0	2	11,200.0	3	8,400.0	16	11,200.0	1	8,400.0	3	11,743.6	4	9,658.5	5	8,400.0	17	11,200.0	4	8,400.0	4	11,200.0	5	11,200.0	6	8,400.0	18	11,200.0	5	8,400.0	5	11,200.0	6	11,200.0	7	8,400.0	19	11,200.0	6	8,400.0	6	11,200.0	7	11,200.0	8	8,400.0	20	11,200.0	7	8,400.0	7	11,200.0	8	11,200.0	9	8,400.0	21	11,200.0	8	8,400.0	8	11,200.0	9	11,200.0	10	8,400.0	22	11,200.0	9	8,400.0	9	11,200.0	10	11,200.0	11	8,400.0	23	11,200.0	10	8,400.0	10	11,200.0	11	11,200.0	12	8,400.0	24	11,200.0	11	8,400.0	11	11,200.0	12	11,200.0	13	8,400.0	25	11,200.0	12	8,400.0	12	11,200.0	13	11,200.0	14	8,400.0	26	11,200.0	13	8,400.0	13	11,200.0	14	11,200.0	15	8,400.0	27	11,200.0	14	8,400.0	14	11,200.0	15	11,200.0	16	8,400.0	28	11,200.0	15	8,400.0	15	11,200.0	16	11,200.0	17	8,400.0	29	11,200.0	16	8,400.0	16	11,200.0	17	11,200.0	18	8,400.0	30	11,200.0	17	8,400.0	17	11,200.0	18	11,200.0	19	8,400.0	1	7,405.7	18	8,400.0	18	11,200.0	19	11,200.0	1	10,597.9	2	2,609.4	19	8,400.0	1	8,512.3	2	7,840.0	2	8,828.6	3	8,376.6	2	12,758.4	3	12,758.4	4	7,000.0	3	7,008.5	4	8,502.0	4	7,864.6	4	13,059.8	5	8,400.0	4	10,528.8	5	12,854.4	5	7,843.0	5	9,040.9	6	8,400.0	5	8,400.0	6	7,864.6	6	8,284.6	6	12,380.9	7	8,400.0	6	8,050.3	7	7,843.0	7	9,995.6	7	9,995.6	8	8,400.0	7	8,396.4	8	8,284.6	8	7,000.0	8	10,929.6	9	8,400.0	8	8,396.4	9	8,284.6	9	7,000.0	9	8,284.6	10	8,400.0	9	9,336.7	10	8,284.6	10	7,000.0	10	8,284.6	11	8,400.0	10	8,400.0	11	8,284.6	11	7,000.0	11	8,284.6	12	8,400.0	11	8,400.0	12	8,343.0	12	7,000.0	12	8,343.0	13	8,400.0	12	8,400.0	1	8,327.0	13	7,000.0	1	8,327.0	1	9,240.0	1	10,597.9	2	12,529.9	14	7,000.0	2	8,201.4	2	11,200.0	2	10,528.8			15	7,000.0	3	8,201.4	3	8,400.0	3	8,400.0			16	7,000.0	4	10,482.2	4	8,400.0	4	8,400.0			17	7,000.0									18	7,000.0									19	7,000.0									20	7,000.0									21	7,000.0									22	7,000.0									23	7,000.0									24	7,000.0									25	7,000.0									26	7,000.0									27	7,000.0									28	7,000.0									29	7,000.0									30	7,000.0									31	7,000.0									32	7,000.0									33	7,000.0									34	7,000.0									35	7,000.0									36	7,000.0									37	7,000.0									38	7,000.0									39	7,000.0									40	7,000.0									41	7,000.0									42	7,000.0									43	7,000.0									44	7,000.0									45	7,000.0									46	7,000.0									47	7,000.0									48	7,000.0									49	7,000.0									50	7,000.0									51	7,000.0									52	7,000.0									53	7,000.0									54	7,000.0									55	7,000.0									56	7,000.0									57	7,000.0									58	7,000.0									59	7,000.0									60	7,000.0									61	7,000.0									62	7,000.0									63	7,000.0									64	7,000.0									65	7,000.0									66	7,000.0									67	7,000.0									68	7,000.0									69	7,000.0									70	7,000.0									71	7,000.0									72	7,000.0									73	7,000.0									74	7,000.0									75	7,000.0									76	7,000.0									77	7,000.0									78	7,000.0									79	7,000.0									80	7,000.0									81	7,000.0									82	7,000.0									83	7,000.0									84	7,000.0									85	7,000.0									86	7,000.0									87	7,000.0									88	7,000.0	
	3	11,200.0		4	11,200.0		5	11,200.0		6	8,400.0		7	11,200.0	8	8,400.0	9	11,200.0	10	11,200.0	21	10,122.0	22	11,200.0	23	8,125.2	11	11,200.0	24	7,000.0	25	11,200.0	26	7,000.0	12	11,200.0	27	8,400.0	28	11,200.0	29	11,200.0	30	7,000.0	13	11,200.0	28	8,400.0	29	11,200.0	30	7,000.0	1	10,553.2	14	11,200.0	29	8,400.0	30	7,840.0	1	11,200.0	2	10,528.8	15	11,200.0	30	8,400.0	1	11,200.0	2	11,200.0	3	8,400.0	16	11,200.0	1	8,400.0	3	11,743.6	4	9,658.5	5	8,400.0	17	11,200.0	4	8,400.0	4	11,200.0	5	11,200.0	6	8,400.0	18	11,200.0	5	8,400.0	5	11,200.0	6	11,200.0	7	8,400.0	19	11,200.0	6	8,400.0	6	11,200.0	7	11,200.0	8	8,400.0	20	11,200.0	7	8,400.0	7	11,200.0	8	11,200.0	9	8,400.0	21	11,200.0	8	8,400.0	8	11,200.0	9	11,200.0	10	8,400.0	22	11,200.0	9	8,400.0	9	11,200.0	10	11,200.0	11	8,400.0	23	11,200.0	10	8,400.0	10	11,200.0	11	11,200.0	12	8,400.0	24	11,200.0	11	8,400.0	11	11,200.0	12	11,200.0	13	8,400.0	25	11,200.0	12	8,400.0	12	11,200.0	13	11,200.0	14	8,400.0	26	11,200.0	13	8,400.0	13	11,200.0	14	11,200.0	15	8,400.0	27	11,200.0	14	8,400.0	14	11,200.0	15	11,200.0	16	8,400.0	28	11,200.0	15	8,400.0	15	11,200.0	16	11,200.0	17	8,400.0	29	11,200.0	16	8,400.0	16	11,200.0	17	11,200.0	18	8,400.0	30	11,200.0	17	8,400.0	17	11,200.0	18	11,200.0	19	8,400.0	1	7,405.7	18	8,400.0	18	11,200.0	19	11,200.0	1	10,597.9	2	2,609.4	19	8,400.0	1	8,512.3	2	7,840.0	2	8,828.6	3	8,376.6	2	12,758.4	3	12,758.4	4	7,000.0	3	7,008.5	4	8,502.0	4	7,864.6	4	13,059.8	5	8,400.0	4	10,528.8	5	12,854.4	5	7,843.0	5	9,040.9	6	8,400.0	5	8,400.0	6	7,864.6	6	8,284.6	6	12,380.9	7	8,400.0	6	8,050.3	7	7,843.0	7	9,995.6	7	9,995.6	8	8,400.0	7	8,396.4	8	8,284.6	8	7,000.0	8	10,929.6	9	8,400.0	8	8,396.4	9	8,284.6	9	7,000.0	9	8,284.6	10	8,400.0	9	9,336.7	10	8,284.6	10	7,000.0	10	8,284.6	11	8,400.0	10	8,400.0	11	8,284.6	11	7,000.0	11	8,284.6	12	8,400.0	11	8,400.0	12	8,343.0	12	7,000.0	12	8,343.0	13	8,400.0	12	8,400.0	1	8,327.0	13	7,000.0	1	8,327.0	1	9,240.0	1	10,597.9	2	12,529.9	14	7,000.0	2	8,201.4	2	11,200.0	2	10,528.8			15	7,000.0	3	8,201.4	3	8,400.0	3	8,400.0			16	7,000.0	4	10,482.2	4	8,400.0	4	8,400.0			17	7,000.0									18	7,000.0									19	7,000.0									20	7,000.0									21	7,000.0									22	7,000.0									23	7,000.0									24	7,000.0									25	7,000.0									26	7,000.0									27	7,000.0									28	7,000.0									29	7,000.0									30	7,000.0									31	7,000.0									32	7,000.0									33	7,000.0									34	7,000.0									35	7,000.0									36	7,000.0									37	7,000.0									38	7,000.0									39	7,000.0									40	7,000.0									41	7,000.0									42	7,000.0									43	7,000.0									44	7,000.0									45	7,000.0									46	7,000.0									47	7,000.0									48	7,000.0									49	7,000.0									50	7,000.0									51	7,000.0									52	7,000.0									53	7,000.0									54	7,000.0									55	7,000.0									56	7,000.0									57	7,000.0									58	7,000.0									59	7,000.0									60	7,000.0									61	7,000.0									62	7,000.0									63	7,000.0									64	7,000.0									65	7,000.0									66	7,000.0									67	7,000.0									68	7,000.0									69	7,000.0									70	7,000.0									71	7,000.0									72	7,000.0									73	7,000.0									74	7,000.0									75	7,000.0									76	7,000.0									77	7,000.0									78	7,000.0									79	7,000.0									80	7,000.0									81	7,000.0									82	7,000.0									83	7,000.0									84	7,000.0									85	7,000.0									86	7,000.0									87	7,000.0									88	7,000.0			
	4	11,200.0		5	11,200.0		6	8,400.0		7	11,200.0		8	8,400.0	9	11,200.0	10	11,200.0	21	10,122.0	22	11,200.0	23	8,125.2	11	11,200.0	24	7,000.0	25	11,200.0	26	7,000.0	12	11,200.0	27	8,400.0	28	11,200.0	29	11,200.0	30	7,000.0	13	11,200.0	28	8,400.0	29	11,200.0	30	7,000.0	1	10,553.2	14	11,200.0	29	8,400.0	30	7,840.0	1	11,200.0	2	10,528.8	15	11,200.0	30	8,400.0	1	11,200.0	2	11,200.0	3	8,400.0	16	11,200.0	1	8,400.0	3	11,743.6	4	9,658.5	5	8,400.0	17	11,200.0	4	8,400.0	4	11,200.0	5	11,200.0	6	8,400.0	18	11,200.0	5	8,400.0	5	11,200.0	6	11,200.0	7	8,400.0	19	11,200.0	6	8,400.0	6	11,200.0	7	11,200.0	8	8,400.0	20	11,200.0	7	8,400.0	7	11,200.0	8	11,200.0	9	8,400.0	21	11,200.0	8	8,400.0	8	11,200.0	9	11,200.0	10	8,400.0	22	11,200.0	9	8,400.0	9	11,200.0	10	11,200.0	11	8,400.0	23	11,200.0	10	8,400.0	10	11,200.0	11	11,200.0	12	8,400.0	24	11,200.0	11	8,400.0	11	11,200.0	12	11,200.0	13	8,400.0	25	11,200.0	12	8,400.0	12	11,200.0	13	11,200.0	14	8,400.0	26	11,200.0	13	8,400.0	13	11,200.0	14	11,200.0	15	8,400.0	27	11,200.0	14	8,400.0	14	11,200.0	15	11,200.0	16	8,400.0	28	11,200.0	15	8,400.0	15	11,200.0	16	11,200.0	17	8,400.0	29	11,200.0	16	8,400.0	16	11,200.0	17	11,200.0	18	8,400.0	30	11,200.0	17	8,400.0	17	11,200.0	18	11,200.0	19	8,400.0	1	7,405.7	18	8,400.0	18	11,200.0	19	11,200.0	1	10,597.9	2	2,609.4	19	8,400.0	1	8,512.3	2	7,840.0	2	8,828.6	3	8,376.6	2	12,758.4	3	12,758.4	4	7,000.0	3	7,008.5	4	8,502.0	4	7,864.6	4	13,059.8	5	8,400.0	4	10,528.8	5	12,854.4	5	7,843.0	5	9,040.9	6	8,400.0	5	8,400.0	6	7,864.6	6	8,284.6	6	12,380.9	7	8,400.0	6	8,050.3	7	7,843.0	7	9,995.6	7	9,995.6	8	8,400.0	7	8,396.4	8	8,284.6	8	7,000.0	8	10,929.6	9	8,400.0	8	8,396.4	9	8,284.6	9	7,000.0	9	8,284.6	10	8,400.0	9	9,336.7	10	8,284.6	10	7,000.0	10	8,284.6	11	8,400.0	10	8,400.0	11	8,284.6	11	7,000.0	11	8,284.6	12	8,400.0	11	8,400.0	12	8,343.0	12	7,000.0	12	8,343.0	13	8,400.0	12	8,400.0	1	8,327.0	13	7,000.0	1	8,327.0	1	9,240.0	1	10,597.9	2	12,529.9	14	7,000.0	2	8,201.4	2	11,200.0	2	10,528.8			15	7,000.0	3	8,201.4	3	8,400.0	3	8,400.0			16	7,000.0	4	10,482.2	4	8,400.0	4	8,400.0			17	7,000.0									18	7,000.0									19	7,000.0									20	7,000.0									21	7,000.0									22	7,000.0									23	7,000.0									24	7,000.0									25	7,000.0									26	7,000.0									27	7,000.0									28	7,000.0									29	7,000.0									30	7,000.0									31	7,000.0									32	7,000.0									33	7,000.0									34	7,000.0									35	7,000.0									36	7,000.0									37	7,000.0									38	7,000.0									39	7,000.0									40	7,000.0									41	7,000.0									42	7,000.0									43	7,000.0									44	7,000.0									45	7,000.0									46	7,000.0									47	7,000.0									48	7,000.0									49	7,000.0									50	7,000.0									51	7,000.0									52	7,000.0									53	7,000.0									54	7,000.0									55	7,000.0									56	7,000.0									57	7,000.0									58	7,000.0									59	7,000.0									60	7,000.0									61	7,000.0									62	7,000.0									63	7,000.0									64	7,000.0									65	7,000.0									66	7,000.0									67	7,000.0									68	7,000.0									69	7,000.0									70	7,000.0									71	7,000.0									72	7,000.0									73	7,000.0									74	7,000.0									75	7,000.0									76	7,000.0									77	7,000.0									78	7,000.0									79	7,000.0									80	7,000.0									81	7,000.0									82	7,000.0									83	7,000.0									84	7,000.0									85	7,000.0									86	7,000.0									87	7,000.0									88	7,000.0					
	5	11,200.0		6	8,400.0		7	11,200.0		8	8,400.0		9	11,200.0	10	11,200.0	21	10,122.0	22	11,200.0	23	8,125.2	11	11,200.0	24	7,000.0	25	11,200.0	26	7,000.0	12	11,200.0	27	8,400.0	28	11,200.0	29	11,200.0	30	7,000.0	13	11,200.0	28	8,400.0	29	11,200.0	30	7,000.0	1	10,553.2	14	11,200.0	29	8,400.0	30	7,840.0	1	11,200.0	2	10,528.8	15	11,200.0	30	8,400.0	1	11,200.0	2	11,200.0	3	8,400.0	16	11,200.0	1	8,400.0	3	11,743.6	4	9,658.5	5	8,400.0	17	11,200.0	4	8,400.0	4	11,200.0	5	11,200.0	6	8,400.0	18	11,200.0	5	8,400.0	5	11,200.0	6	11,200.0	7	8,400.0	19	11,200.0	6	8,400.0	6	11,200.0	7	11,200.0	8	8,400.0	20	11,200.0	7	8,400.0	7	11,200.0	8	11,200.0	9	8,400.0	21	11,200.0	8	8,400.0	8	11,200.0	9	11,200.0	10	8,400.0	22	11,200.0	9	8,400.0	9	11,200.0	10	11,200.0	11	8,400.0	23	11,200.0	10	8,400.0	10	11,200.0	11	11,200.0	12	8,400.0	24	11,200.0	11	8,400.0	11	11,200.0	12	11,200.0	13	8,400.0	25	11,200.0	12	8,400.0	12	11,200.0	13	11,200.0	14	8,400.0	26	11,200.0	13	8,400.0	13	11,200.0	14	11,200.0	15	8,400.0	27	11,200.0	14	8,400.0	14	11,200.0	15	11,200.0	16	8,400.0	28	11,200.0	15	8,400.0	15	11,200.0	16	11,200.0	17	8,400.0	29	11,200.0	16	8,400.0	16	11,200.0	17	11,200.0	18	8,400.0	30	11,200.0	17	8,400.0	17	11,200.0	18	11,200.0	19	8,400.0	1	7,405.7	18	8,400.0	18	11,200.0	19	11,200.0	1	10,597.9	2	2,609.4	19	8,400.0	1	8,512.3	2	7,840.0	2	8,828.6	3	8,376.6	2	12,758.4	3	12,758.4	4	7,000.0	3	7,008.5	4	8,502.0	4	7,864.6	4	13,059.8	5	8,400.0	4	10,528.8	5	12,854.4	5	7,843.0	5	9,040.9	6	8,400.0	5	8,400.0	6	7,864.6	6	8,284.6	6	12,380.9	7	8,400.0	6	8,050.3	7	7,843.0	7	9,995.6	7	9,995.6	8	8,400.0	7	8,396.4	8	8,284.6	8	7,000.0	8	10,929.6	9	8,400.0	8	8,396.4	9	8,284.6	9	7,000.0	9	8,284.6	10	8,400.0	9	9,336.7	10	8,284.6	10	7,000.0	10	8,284.6	11	8,400.0	10	8,400.0	11	8,284.6	11	7,000.0	11	8,284.6	12	8,400.0	11	8,400.0	12	8,343.0	12	7,000.0	12	8,343.0	13	8,400.0	12	8,400.0	1	8,327.0	13	7,000.0	1	8,327.0	1	9,240.0	1	10,597.9	2	12,529.9	14	7,000.0	2	8,201.4	2	11,200.0	2	10,528.8			15	7,000.0	3	8,201.4	3	8,400.0	3	8,400.0			16	7,000.0	4	10,482.2	4	8,400.0	4	8,400.0			17	7,000.0									18	7,000.0									19	7,000.0									20	7,000.0									21	7,000.0									22	7,000.0									23	7,000.0									24	7,000.0									25	7,000.0									26	7,000.0									27	7,000.0									28	7,000.0									29	7,000.0									30	7,000.0									31	7,000.0									32	7,000.0									33	7,000.0									34	7,000.0									35	7,000.0									36	7,000.0									37	7,000.0									38	7,000.0									39	7,000.0									40	7,000.0									41	7,000.0									42	7,000.0									43	7,000.0									44	7,000.0									45	7,000.0									46	7,000.0									47	7,000.0									48	7,000.0									49	7,000.0									50	7,000.0									51	7,000.0									52	7,000.0									53	7,000.0									54	7,000.0									55	7,000.0									56	7,000.0									57	7,000.0									58	7,000.0									59	7,000.0									60	7,000.0									61	7,000.0									62	7,000.0									63	7,000.0									64	7,000.0									65	7,000.0									66	7,000.0									67	7,000.0									68	7,000.0									69	7,000.0									70	7,000.0									71	7,000.0									72	7,000.0									73	7,000.0									74	7,000.0									75	7,000.0									76	7,000.0									77	7,000.0									78	7,000.0									79	7,000.0									80	7,000.0									81	7,000.0									82	7,000.0									83	7,000.0									84	7,000.0									85	7,000.0									86	7,000.0									87	7,000.0									88	7,000.0							
	6	8,400.0		7	11,200.0		8	8,400.0		9	11,200.0		10	11,200.0	21	10,122.0	22	11,200.0	23	8,125.2	11	11,200.0	24	7,000.0	25	11,200.0	26	7,000.0	12	11,200.0	27	8,400.0	28	11,200.0	29	11,200.0	30	7,000.0	13	11,200.0	28	8,400.0	29	11,200.0	30	7,000.0	1	10,553.2	14	11,200.0	29	8,400.0	30	7,840.0	1	11,200.0	2	10,528.8	15	11,200.0	30	8,400.0	1	11,200.0	2	11,200.0	3	8,400.0	16	11,200.0	1	8,400.0	3	11,743.6	4	9,658.5	5	8,400.0	17	11,200.0	4	8,400.0	4	11,200.0	5	11,200.0	6	8,400.0	18	11,200.0	5	8,400.0	5	11,200.0	6	11,200.0	7	8,400.0	19	11,200.0	6	8,400.0	6	11,200.0	7	11,200.0	8	8,400.0	20	11,200.0	7	8,400.0	7	11,200.0	8	11,200.0	9	8,400.0	21	11,200.0	8	8,400.0	8	11,200.0	9	11,200.0	10	8,400.0	22	11,200.0	9	8,400.0	9	11,200.0	10	11,200.0	11	8,400.0	23	11,200.0	10	8,400.0	10	11,200.0	11	11,200.0	12	8,400.0	24	11,200.0	11	8,400.0	11	11,200.0	12	11,200.0	13	8,400.0	25	11,200.0	12	8,400.0	12	11,200.0	13	11,200.0	14	8,400.0	26	11,200.0	13	8,400.0	13	11,200.0	14	11,200.0	15	8,400.0	27	11,200.0	14	8,400.0	14	11,200.0	15	11,200.0	16	8,400.0	28	11,200.0	15	8,400.0	15	11,200.0	16	11,200.0	17	8,400.0	29	11,200.0	16	8,400.0	16	11,200.0	17	11,200.0	18	8,400.0	30	11,200.0	17	8,400.0	17	11,200.0	18	11,200.0	19	8,400.0	1	7,405.7	18	8,400.0	18	11,200.0	19	11,200.0	1	10,597.9	2	2,609.4	19	8,400.0	1	8,512.3	2	7,840.0	2	8,828.6	3	8,376.6	2	12,758.4	3	12,758.4	4	7,000.0	3	7,008.5	4	8,502.0	4	7,864.6	4	13,059.8	5	8,400.0	4	10,528.8	5	12,854.4	5	7,843.0	5	9,040.9	6	8,400.0	5	8,400.0	6	7,864.6	6	8,284.6	6	12,380.9	7	8,400.0	6	8,050.3	7	7,843.0	7	9,995.6	7	9,995.6	8	8,400.0	7	8,396.4	8	8,284.6	8	7,000.0	8	10,929.6	9	8,400.0	8	8,396.4	9	8,284.6	9	7,000.0	9	8,284.6	10	8,400.0	9	9,336.7	10	8,284.6	10	7,000.0	10	8,284.6	11	8,400.0	10	8,400.0	11	8,284.6	11	7,000.0	11	8,284.6	12	8,400.0	11	8,400.0	12	8,343.0	12	7,000.0	12	8,343.0	13	8,400.0	12	8,400.0	1	8,327.0	13	7,000.0	1	8,327.0	1	9,240.0	1	10,597.9	2	12,529.9	14	7,000.0	2	8,201.4	2	11,200.0	2	10,528.8			15	7,000.0	3	8,201.4	3	8,400.0	3	8,400.0			16	7,000.0	4	10,482.2	4	8,400.0	4	8,400.0			17	7,000.0									18	7,000.0									19	7,000.0									20	7,000.0									21	7,000.0									22	7,000.0									23	7,000.0									24	7,000.0									25	7,000.0									26	7,000.0									27	7,000.0									28	7,000.0									29	7,000.0									30	7,000.0									31	7,000.0									32	7,000.0									33	7,000.0									34	7,000.0									35	7,000.0									36	7,000.0									37	7,000.0									38	7,000.0									39	7,000.0									40	7,000.0									41	7,000.0									42	7,000.0									43	7,000.0									44	7,000.0									45	7,000.0									46	7,000.0									47	7,000.0									48	7,000.0									49	7,000.0									50	7,000.0									51	7,000.0									52	7,000.0									53	7,000.0									54	7,000.0									55	7,000.0									56	7,000.0									57	7,000.0									58	7,000.0									59	7,000.0									60	7,000.0									61	7,000.0									62	7,000.0									63	7,000.0									64	7,000.0									65	7,000.0									66	7,000.0									67	7,000.0									68	7,000.0									69	7,000.0									70	7,000.0									71	7,000.0									72	7,000.0									73	7,000.0									74	7,000.0									75	7,000.0									76	7,000.0									77	7,000.0									78	7,000.0									79	7,000.0									80	7,000.0									81	7,000.0									82	7,000.0									83	7,000.0									84	7,000.0									85	7,000.0									86	7,000.0									87	7,000.0									88	7,000.0									
	7	11,200.0		8	8,400.0		9	11,200.0		10	11,200.0		21	10,122.0	22	11,200.0	23	8,125.2	11	11,200.0	24	7,000.0	25	11,200.0	26	7,000.0	12	11,200.0	27	8,400.0	28	11,200.0	29	11,200.0	30	7,000.0	13	11,200.0	28	8,400.0	29	11,200.0	30	7,000.0	1	10,553.2	14	11,200.0	29	8,400.0	30	7,840.0	1	11,200.0	2	10,528.8	15	11,200.0	30	8,400.0	1	11,200.0	2	11,200.0	3	8,400.0	16	11,200.0	1	8,400.0	3	11,743.6	4	9,658.5	5	8,400.0	17	11,200.0	4	8,400.0	4	11,200.0	5	11,200.0	6	8,400.0	18	11,200.0	5	8,400.0	5	11,200.0	6	11,200.0	7	8,400.0	19	11,200.0	6	8,400.0	6	11,200.0	7	11,200.0	8	8,400.0	20	11,200.0	7	8,400.0	7	11,200.0	8	11,200.0	9	8,400.0	21	11,200.0	8	8,400.0	8	11,200.0	9	11,200.0	10	8,400.0	22	11,200.0	9	8,400.0	9	11,200.0	10	11,200.0	11	8,400.0	23	11,200.0	10	8,400.0	10	11,200.0	11	11,200.0	12	8,400.0	24	11,200.0	11	8,400.0	11	11,200.0	12	11,200.0	13	8,400.0	25	11,200.0	12	8,400.0	12	11,200.0	13	11,200.0	14	8,400.0	26	11,200.0	13	8,400.0	13	11,200.0	14	11,200.0	15	8,400.0	27	11,200.0	14	8,400.0	14	11,200.0	15	11,200.0	16	8,400.0	28	11,200.0	15	8,400.0	15	11,200.0	16	11,200.0	17	8,400.0	29	11,200.0	16	8,400.0	16	11,200.0	17	11,200.0	18	8,400.0	30	11,200.0	17	8,400.0	17	11,200.0	18	11,200.0	19	8,400.0	1	7,405.7	18	8,400.0	18	11,200.0	19	11,200.0	1	10,597.9	2	2,609.4	19	8,400.0	1	8,512.3	2	7,840.0	2	8,828.6	3	8,376.6	2	12,758.4	3	12,758.4	4	7,000.0	3	7,008.5	4	8,502.0	4	7,864.6	4	13,059.8	5	8,400.0	4	10,528.8	5	12,854.4	5	7,843.0	5	9,040.9	6	8,400.0	5	8,400.0	6	7,864.6	6	8,284.6	6	12,380.9	7	8,400.0	6	8,050.3	7	7,843.0	7	9,995.6	7	9,995.6	8	8,400.0	7	8,396.4	8	8,284.6	8	7,000.0	8	10,929.6	9	8,400.0	8	8,396.4	9	8,284.6	9	7,000.0	9	8,284.6	10	8,400.0	9	9,336.7	10	8,284.6	10	7,000.0	10	8,284.6	11	8,400.0	10	8,400.0	11	8,284.6	11	7,000.0	11	8,284.6	12	8,400.0	11	8,400.0	12	8,343.0	12	7,000.0	12	8,343.0	13	8,400.0	12	8,400.0	1	8,327.0	13	7,000.0	1	8,327.0	1	9,240.0	1	10,597.9	2	12,529.9	14	7,000.0	2	8,201.4	2	11,200.0	2	10,528.8			15	7,000.0	3	8,201.4	3	8,400.0	3	8,400.0			16	7,000.0	4	10,482.2	4	8,400.0	4	8,400.0			17	7,000.0									18	7,000.0									19	7,000.0									20	7,000.0									21	7,000.0									22	7,000.0									23	7,000.0									24	7,000.0									25	7,000.0									26	7,000.0									27	7,000.0									28	7,000.0									29	7,000.0									30	7,000.0									31	7,000.0									32	7,000.0									33	7,000.0									34	7,000.0									35	7,000.0									36	7,000.0									37	7,000.0									38	7,000.0									39	7,000.0									40	7,000.0									41	7,000.0									42	7,000.0									43	7,000.0									44	7,000.0									45	7,000.0									46	7,000.0									47	7,000.0									48	7,000.0									49	7,000.0									50	7,000.0									51	7,000.0									52	7,000.0									53	7,000.0									54	7,000.0									55	7,000.0									56	7,000.0									57	7,000.0									58	7,000.0									59	7,000.0									60	7,000.0									61	7,000.0									62	7,000.0									63	7,000.0									64	7,000.0									65	7,000.0									66	7,000.0									67	7,000.0									68	7,000.0									69	7,000.0									70	7,000.0									71	7,000.0									72	7,000.0									73	7,000.0									74	7,000.0									75	7,000.0									76	7,000.0									77	7,000.0									78	7,000.0									79	7,000.0									80	7,000.0									81	7,000.0									82	7,000.0									83	7,000.0									84	7,000.0									85	7,000.0									86	7,000.0									87	7,000.0									88	7,000.0											
	8	8,400.0		9	11,200.0		10	11,200.0		21	10,122.0		22	11,200.0	23	8,125.2	11	11,200.0	24	7,000.0	25	11,200.0	26	7,000.0	12	11,200.0	27	8,400.0	28	11,200.0	29	11,200.0	30	7,000.0	13	11,200.0	28	8,400.0	29	11,200.0	30	7,000.0	1	10,553.2	14	11,200.0	29	8,400.0	30	7,840.0	1	11,200.0	2	10,528.8	15	11,200.0	30	8,400.0	1	11,200.0	2	11,200.0	3	8,400.0	16	11,200.0	1	8,400.0	3	11,743.6	4	9,658.5	5	8,400.0	17	11,200.0	4	8,400.0	4	11,200.0	5	11,200.0	6	8,400.0	18	11,200.0	5	8,400.0	5	11,200.0	6	11,200.0	7	8,400.0	19	11,200.0	6	8,400.0	6	11,200.0	7	11,200.0	8	8,400.0	20	11,200.0	7	8,400.0	7	11,200.0	8	11,200.0	9	8,400.0	21	11,200.0	8	8,400.0	8	11,200.0	9	11,200.0	10	8,400.0	22	11,200.0	9	8,400.0	9	11,200.0	10	11,200.0	11	8,400.0	23	11,200.0	10	8,400.0	10	11,200.0	11	11,200.0	12	8,400.0	24	11,200.0	11	8,400.0	11	11,200.0	12	11,200.0	13	8,400.0	25	11,200.0	12	8,400.0	12	11,200.0	13	11,200.0	14	8,400.0	26	11,200.0	13	8,400.0	13	11,200.0	14	11,200.0	15	8,400.0	27	11,200.0	14	8,400.0	14	11,200.0	15	11,200.0	16	8,400.0	28	11,200.0	15	8,400.0	15	11,200.0	16	11,200.0	17	8,400.0	29	11,200.0	16	8,400.0	16	11,200.0	17	11,200.0	18	8,400.0	30	11,200.0	17	8,400.0	17	11,200.0	18	11,200.0	19	8,400.0	1	7,405.7	18	8,400.0	18	11,200.0	19	11,200.0	1	10,597.9	2	2,609.4	19	8,400.0	1	8,512.3	2	7,840.0	2	8,828.6	3	8,376.6	2	12,758.4	3	12,758.4	4	7,000.0	3	7,008.5	4	8,502.0	4	7,864.6	4	13,059.8	5	8,400.0	4	10,528.8	5	12,854.4	5	7,843.0	5	9,040.9	6	8,400.0	5	8,400.0	6	7,864.6	6	8,284.6	6	12,380.9	7	8,400.0	6	8,050.3	7	7,843.0	7	9,995.6	7	9,995.6	8	8,400.0	7	8,396.4	8	8,284.6	8	7,000.0	8	10,929.6	9	8,400.0	8	8,396.4	9	8,284.6	9	7,000.0	9	8,284.6	10	8,400.0	9	9,336.7	10	8,284.6	10	7,000.0	10	8,284.6	11	8,400.0	10	8,400.0	11	8,284.6	11	7,000.0	11	8,284.6	12	8,400.0	11	8,400.0	12	8,343.0	12	7,000.0	12	8,343.0	13	8,400.0	12	8,400.0	1	8,327.0	13	7,000.0	1	8,327.0	1	9,240.0	1	10,597.9	2	12,529.9	14	7,000.0	2	8,201.4	2	11,200.0	2	10,528.8			15	7,000.0	3	8,201.4	3	8,400.0	3	8,400.0			16	7,000.0	4	10,482.2	4	8,400.0	4	8,400.0			17	7,000.0									18	7,000.0									19	7,000.0									20	7,000.0									21	7,000.0									22	7,000.0									23	7,000.0									24	7,000.0									25	7,000.0									26	7,000.0									27	7,000.0									28	7,000.0									29	7,000.0									30	7,000.0									31	7,000.0									32	7,000.0									33	7,000.0									34	7,000.0									35	7,000.0									36	7,000.0									37	7,000.0									38	7,000.0									39	7,000.0									40	7,000.0									41	7,000.0									42	7,000.0									43	7,000.0									44	7,000.0									45	7,000.0									46	7,000.0									47	7,000.0									48	7,000.0									49	7,000.0									50	7,000.0									51	7,000.0									52	7,000.0									53	7,000.0									54	7,000.0									55	7,000.0									56	7,000.0									57	7,000.0									58	7,000.0									59	7,000.0									60	7,000.0									61	7,000.0									62	7,000.0									63	7,000.0									64	7,000.0									65	7,000.0									66	7,000.0									67	7,000.0									68	7,000.0									69	7,000.0									70	7,000.0									71	7,000.0									72	7,000.0									73	7,000.0									74	7,000.0									75	7,000.0									76	7,000.0									77	7,000.0									78	7,000.0									79	7,000.0									80	7,000.0									81	7,000.0									82	7,000.0									83	7,000.0									84	7,000.0									85	7,000.0									86	7,000.0									87	7,000.0									88	7,000.0													
	9	11,200.0		10	11,200.0		21	10,122.0		22	11,200.0		23	8,125.2	11	11,200.0	24	7,000.0	25	11,200.0	26	7,000.0	12	11,200.0	27	8,400.0	28	11,200.0	29	11,200.0	30	7,000.0	13	11,200.0	28	8,400.0	29	11,200.0	30	7,000.0	1	10,553.2	14	11,200.0	29	8,400.0	30	7,840.0	1	11,200.0	2	10,528.8	15	11,200.0	30	8,400.0	1	11,200.0	2	11,200.0	3	8,400.0	16	11,200.0	1	8,400.0	3	11,743.6	4	9,658.5	5	8,400.0	17	11,200.0	4	8,400.0	4	11,200.0	5	11,200.0	6	8,400.0	18	11,200.0	5	8,400.0	5	11,200.0	6	11,200.0	7	8,400.0	19	11,200.0	6	8,400.0	6	11,200.0	7	11,200.0	8	8,400.0	20	11,200.0	7	8,400.0	7	11,200.0	8	11,200.0	9	8,400.0	21	11,200.0	8	8,400.0	8	11,200.0	9	11,200.0	10	8,400.0	22	11,200.0	9	8,400.0	9	11,200.0	10	11,200.0	11	8,400.0	23	11,200.0	10	8,400.0	10	11,200.0	11	11,200.0	12	8,400.0	24	11,200.0	11	8,400.0	11	11,200.0	12	11,200.0	13	8,400.0	25	11,200.0	12	8,400.0	12	11,200.0	13	11,200.0	14	8,400.0	26	11,200.0	13	8,400.0	13	11,200.0	14	11,200.0	15	8,400.0	27	11,200.0	14	8,400.0	14	11,200.0	15	11,200.0	16	8,400.0	28	11,200.0	15	8,400.0	15	11,200.0	16	11,200.0	17	8,400.0	29	11,200.0	16	8,400.0	16	11,200.0	17	11,200.0	18	8,400.0	30	11,200.0	17	8,400.0	17	11,200.0	18	11,200.0	19	8,400.0	1	7,405.7	18	8,400.0	18	11,200.0	19	11,200.0	1	10,597.9	2	2,609.4	19	8,400.0	1	8,512.3	2	7,840.0	2	8,828.6	3	8,376.6	2	12,758.4	3	12,758.4	4	7,000.0	3	7,008.5	4	8,502.0	4	7,864.6	4	13,059.8	5	8,400.0	4	10,528.8	5	12,854.4	5	7,843.0	5	9,040.9	6	8,400.0	5	8,400.0	6	7,864.6	6	8,284.6	6	12,380.9	7	8,400.0	6	8,050.3	7	7,843.0	7	9,995.6	7	9,995.6	8	8,400.0	7	8,396.4	8	8,284.6	8	7,000.0	8	10,929.6	9	8,400.0	8	8,396.4	9	8,284.6	9	7,000.0	9	8,284.6	10	8,400.0	9	9,336.7	10	8,284.6	10	7,000.0	10	8,284.6	11	8,400.0	10	8,400.0	11	8,284.6	11	7,000.0	11	8,284.6	12	8,400.0	11	8,400.0	12	8,343.0	12	7,000.0	12	8,343.0	13	8,400.0	12	8,400.0	1	8,327.0	13	7,000.0	1	8,327.0	1	9,240.0	1	10,597.9	2	12,529.9	14	7,000.0	2	8,201.4	2	11,200.0	2	10,528.8			15	7,000.0	3	8,201.4	3	8,400.0	3	8,400.0			16	7,000.0	4	10,482.2	4	8,400.0	4	8,400.0			17	7,000.0									18	7,000.0									19	7,000.0									20	7,000.0									21	7,000.0									22	7,000.0									23	7,000.0									24	7,000.0									25	7,000.0									26	7,000.0									27	7,000.0									28	7,000.0									29	7,000.0									30	7,000.0									31	7,000.0									32	7,000.0									33	7,000.0									34	7,000.0									35	7,000.0									36	7,000.0									37	7,000.0									38	7,000.0									39	7,000.0									40	7,000.0									41	7,000.0									42	7,000.0									43	7,000.0									44	7,000.0									45	7,000.0									46	7,000.0									47	7,000.0									48	7,000.0									49	7,000.0									50	7,000.0									51	7,000.0									52	7,000.0									53	7,000.0									54	7,000.0									55	7,000.0									56	7,000.0									57	7,000.0									58	7,000.0									59	7,000.0									60	7,000.0									61	7,000.0									62	7,000.0									63	7,000.0									64	7,000.0									65	7,000.0									66	7,000.0									67	7,000.0									68	7,000.0									69	7,000.0									70	7,000.0									71	7,000.0									72	7,000.0									73	7,000.0									74	7,000.0									75	7,000.0									76	7,000.0									77	7,000.0									78	7,000.0									79	7,000.0									80	7,000.0									81	7,000.0									82	7,000.0									83	7,000.0									84	7,000.0									85	7,000.0									86	7,000.0									87	7,000.0									88	7,000.0															
10	11,200.0	21	10,122.0	22	11,200.0	23	8,125.2																																																																																																																																																																																																																																																																																																																																																																																																																																																																																																																																																																																																																																																																																																																																																																																																																																																																																																																																																																																																																																																																																																																																						
11	11,200.0	24	7,000.0	25	11,200.0	26	7,000.0																																																																																																																																																																																																																																																																																																																																																																																																																																																																																																																																																																																																																																																																																																																																																																																																																																																																																																																																																																																																																																																																																																																																						
12	11,200.0	27	8,400.0	28	11,200.0	29	11,200.0	30	7,000.0																																																																																																																																																																																																																																																																																																																																																																																																																																																																																																																																																																																																																																																																																																																																																																																																																																																																																																																																																																																																																																																																																																																																				
13	11,200.0	28	8,400.0	29	11,200.0	30	7,000.0	1	10,553.2																																																																																																																																																																																																																																																																																																																																																																																																																																																																																																																																																																																																																																																																																																																																																																																																																																																																																																																																																																																																																																																																																																																																				
14	11,200.0	29	8,400.0	30	7,840.0	1	11,200.0	2	10,528.8																																																																																																																																																																																																																																																																																																																																																																																																																																																																																																																																																																																																																																																																																																																																																																																																																																																																																																																																																																																																																																																																																																																																				
15	11,200.0	30	8,400.0	1	11,200.0	2	11,200.0	3	8,400.0																																																																																																																																																																																																																																																																																																																																																																																																																																																																																																																																																																																																																																																																																																																																																																																																																																																																																																																																																																																																																																																																																																																																				
16	11,200.0	1	8,400.0	3	11,743.6	4	9,658.5	5	8,400.0																																																																																																																																																																																																																																																																																																																																																																																																																																																																																																																																																																																																																																																																																																																																																																																																																																																																																																																																																																																																																																																																																																																																				
17	11,200.0	4	8,400.0	4	11,200.0	5	11,200.0	6	8,400.0																																																																																																																																																																																																																																																																																																																																																																																																																																																																																																																																																																																																																																																																																																																																																																																																																																																																																																																																																																																																																																																																																																																																				
18	11,200.0	5	8,400.0	5	11,200.0	6	11,200.0	7	8,400.0																																																																																																																																																																																																																																																																																																																																																																																																																																																																																																																																																																																																																																																																																																																																																																																																																																																																																																																																																																																																																																																																																																																																				
19	11,200.0	6	8,400.0	6	11,200.0	7	11,200.0	8	8,400.0																																																																																																																																																																																																																																																																																																																																																																																																																																																																																																																																																																																																																																																																																																																																																																																																																																																																																																																																																																																																																																																																																																																																				
20	11,200.0	7	8,400.0	7	11,200.0	8	11,200.0	9	8,400.0																																																																																																																																																																																																																																																																																																																																																																																																																																																																																																																																																																																																																																																																																																																																																																																																																																																																																																																																																																																																																																																																																																																																				
21	11,200.0	8	8,400.0	8	11,200.0	9	11,200.0	10	8,400.0																																																																																																																																																																																																																																																																																																																																																																																																																																																																																																																																																																																																																																																																																																																																																																																																																																																																																																																																																																																																																																																																																																																																				
22	11,200.0	9	8,400.0	9	11,200.0	10	11,200.0	11	8,400.0																																																																																																																																																																																																																																																																																																																																																																																																																																																																																																																																																																																																																																																																																																																																																																																																																																																																																																																																																																																																																																																																																																																																				
23	11,200.0	10	8,400.0	10	11,200.0	11	11,200.0	12	8,400.0																																																																																																																																																																																																																																																																																																																																																																																																																																																																																																																																																																																																																																																																																																																																																																																																																																																																																																																																																																																																																																																																																																																																				
24	11,200.0	11	8,400.0	11	11,200.0	12	11,200.0	13	8,400.0																																																																																																																																																																																																																																																																																																																																																																																																																																																																																																																																																																																																																																																																																																																																																																																																																																																																																																																																																																																																																																																																																																																																				
25	11,200.0	12	8,400.0	12	11,200.0	13	11,200.0	14	8,400.0																																																																																																																																																																																																																																																																																																																																																																																																																																																																																																																																																																																																																																																																																																																																																																																																																																																																																																																																																																																																																																																																																																																																				
26	11,200.0	13	8,400.0	13	11,200.0	14	11,200.0	15	8,400.0																																																																																																																																																																																																																																																																																																																																																																																																																																																																																																																																																																																																																																																																																																																																																																																																																																																																																																																																																																																																																																																																																																																																				
27	11,200.0	14	8,400.0	14	11,200.0	15	11,200.0	16	8,400.0																																																																																																																																																																																																																																																																																																																																																																																																																																																																																																																																																																																																																																																																																																																																																																																																																																																																																																																																																																																																																																																																																																																																				
28	11,200.0	15	8,400.0	15	11,200.0	16	11,200.0	17	8,400.0																																																																																																																																																																																																																																																																																																																																																																																																																																																																																																																																																																																																																																																																																																																																																																																																																																																																																																																																																																																																																																																																																																																																				
29	11,200.0	16	8,400.0	16	11,200.0	17	11,200.0	18	8,400.0																																																																																																																																																																																																																																																																																																																																																																																																																																																																																																																																																																																																																																																																																																																																																																																																																																																																																																																																																																																																																																																																																																																																				
30	11,200.0	17	8,400.0	17	11,200.0	18	11,200.0	19	8,400.0																																																																																																																																																																																																																																																																																																																																																																																																																																																																																																																																																																																																																																																																																																																																																																																																																																																																																																																																																																																																																																																																																																																																				
1	7,405.7	18	8,400.0	18	11,200.0	19	11,200.0	1	10,597.9																																																																																																																																																																																																																																																																																																																																																																																																																																																																																																																																																																																																																																																																																																																																																																																																																																																																																																																																																																																																																																																																																																																																				
2	2,609.4	19	8,400.0	1	8,512.3	2	7,840.0	2	8,828.6																																																																																																																																																																																																																																																																																																																																																																																																																																																																																																																																																																																																																																																																																																																																																																																																																																																																																																																																																																																																																																																																																																																																				
3	8,376.6	2	12,758.4	3	12,758.4	4	7,000.0	3	7,008.5																																																																																																																																																																																																																																																																																																																																																																																																																																																																																																																																																																																																																																																																																																																																																																																																																																																																																																																																																																																																																																																																																																																																				
4	8,502.0	4	7,864.6	4	13,059.8	5	8,400.0	4	10,528.8																																																																																																																																																																																																																																																																																																																																																																																																																																																																																																																																																																																																																																																																																																																																																																																																																																																																																																																																																																																																																																																																																																																																				
5	12,854.4	5	7,843.0	5	9,040.9	6	8,400.0	5	8,400.0																																																																																																																																																																																																																																																																																																																																																																																																																																																																																																																																																																																																																																																																																																																																																																																																																																																																																																																																																																																																																																																																																																																																				
6	7,864.6	6	8,284.6	6	12,380.9	7	8,400.0	6	8,050.3																																																																																																																																																																																																																																																																																																																																																																																																																																																																																																																																																																																																																																																																																																																																																																																																																																																																																																																																																																																																																																																																																																																																				
7	7,843.0	7	9,995.6	7	9,995.6	8	8,400.0	7	8,396.4																																																																																																																																																																																																																																																																																																																																																																																																																																																																																																																																																																																																																																																																																																																																																																																																																																																																																																																																																																																																																																																																																																																																				
8	8,284.6	8	7,000.0	8	10,929.6	9	8,400.0	8	8,396.4																																																																																																																																																																																																																																																																																																																																																																																																																																																																																																																																																																																																																																																																																																																																																																																																																																																																																																																																																																																																																																																																																																																																				
9	8,284.6	9	7,000.0	9	8,284.6	10	8,400.0	9	9,336.7																																																																																																																																																																																																																																																																																																																																																																																																																																																																																																																																																																																																																																																																																																																																																																																																																																																																																																																																																																																																																																																																																																																																				
10	8,284.6	10	7,000.0	10	8,284.6	11	8,400.0	10	8,400.0																																																																																																																																																																																																																																																																																																																																																																																																																																																																																																																																																																																																																																																																																																																																																																																																																																																																																																																																																																																																																																																																																																																																				
11	8,284.6	11	7,000.0	11	8,284.6	12	8,400.0	11	8,400.0																																																																																																																																																																																																																																																																																																																																																																																																																																																																																																																																																																																																																																																																																																																																																																																																																																																																																																																																																																																																																																																																																																																																				
12	8,343.0	12	7,000.0	12	8,343.0	13	8,400.0	12	8,400.0																																																																																																																																																																																																																																																																																																																																																																																																																																																																																																																																																																																																																																																																																																																																																																																																																																																																																																																																																																																																																																																																																																																																				
1	8,327.0	13	7,000.0	1	8,327.0	1	9,240.0	1	10,597.9																																																																																																																																																																																																																																																																																																																																																																																																																																																																																																																																																																																																																																																																																																																																																																																																																																																																																																																																																																																																																																																																																																																																				
2	12,529.9	14	7,000.0	2	8,201.4	2	11,200.0	2	10,528.8																																																																																																																																																																																																																																																																																																																																																																																																																																																																																																																																																																																																																																																																																																																																																																																																																																																																																																																																																																																																																																																																																																																																				
		15	7,000.0	3	8,201.4	3	8,400.0	3	8,400.0																																																																																																																																																																																																																																																																																																																																																																																																																																																																																																																																																																																																																																																																																																																																																																																																																																																																																																																																																																																																																																																																																																																																				
		16	7,000.0	4	10,482.2	4	8,400.0	4	8,400.0																																																																																																																																																																																																																																																																																																																																																																																																																																																																																																																																																																																																																																																																																																																																																																																																																																																																																																																																																																																																																																																																																																																																				
		17	7,000.0																																																																																																																																																																																																																																																																																																																																																																																																																																																																																																																																																																																																																																																																																																																																																																																																																																																																																																																																																																																																																																																																																																																																										
		18	7,000.0																																																																																																																																																																																																																																																																																																																																																																																																																																																																																																																																																																																																																																																																																																																																																																																																																																																																																																																																																																																																																																																																																																																																										
		19	7,000.0																																																																																																																																																																																																																																																																																																																																																																																																																																																																																																																																																																																																																																																																																																																																																																																																																																																																																																																																																																																																																																																																																																																																										
		20	7,000.0																																																																																																																																																																																																																																																																																																																																																																																																																																																																																																																																																																																																																																																																																																																																																																																																																																																																																																																																																																																																																																																																																																																																										
		21	7,000.0																																																																																																																																																																																																																																																																																																																																																																																																																																																																																																																																																																																																																																																																																																																																																																																																																																																																																																																																																																																																																																																																																																																																										
		22	7,000.0																																																																																																																																																																																																																																																																																																																																																																																																																																																																																																																																																																																																																																																																																																																																																																																																																																																																																																																																																																																																																																																																																																																																										
		23	7,000.0																																																																																																																																																																																																																																																																																																																																																																																																																																																																																																																																																																																																																																																																																																																																																																																																																																																																																																																																																																																																																																																																																																																																										
		24	7,000.0																																																																																																																																																																																																																																																																																																																																																																																																																																																																																																																																																																																																																																																																																																																																																																																																																																																																																																																																																																																																																																																																																																																																										
		25	7,000.0																																																																																																																																																																																																																																																																																																																																																																																																																																																																																																																																																																																																																																																																																																																																																																																																																																																																																																																																																																																																																																																																																																																																										
		26	7,000.0																																																																																																																																																																																																																																																																																																																																																																																																																																																																																																																																																																																																																																																																																																																																																																																																																																																																																																																																																																																																																																																																																																																																										
		27	7,000.0																																																																																																																																																																																																																																																																																																																																																																																																																																																																																																																																																																																																																																																																																																																																																																																																																																																																																																																																																																																																																																																																																																																																										
		28	7,000.0																																																																																																																																																																																																																																																																																																																																																																																																																																																																																																																																																																																																																																																																																																																																																																																																																																																																																																																																																																																																																																																																																																																																										
		29	7,000.0																																																																																																																																																																																																																																																																																																																																																																																																																																																																																																																																																																																																																																																																																																																																																																																																																																																																																																																																																																																																																																																																																																																																										
		30	7,000.0																																																																																																																																																																																																																																																																																																																																																																																																																																																																																																																																																																																																																																																																																																																																																																																																																																																																																																																																																																																																																																																																																																																																										
		31	7,000.0																																																																																																																																																																																																																																																																																																																																																																																																																																																																																																																																																																																																																																																																																																																																																																																																																																																																																																																																																																																																																																																																																																																																										
		32	7,000.0																																																																																																																																																																																																																																																																																																																																																																																																																																																																																																																																																																																																																																																																																																																																																																																																																																																																																																																																																																																																																																																																																																																																										
		33	7,000.0																																																																																																																																																																																																																																																																																																																																																																																																																																																																																																																																																																																																																																																																																																																																																																																																																																																																																																																																																																																																																																																																																																																																										
		34	7,000.0																																																																																																																																																																																																																																																																																																																																																																																																																																																																																																																																																																																																																																																																																																																																																																																																																																																																																																																																																																																																																																																																																																																																										
		35	7,000.0																																																																																																																																																																																																																																																																																																																																																																																																																																																																																																																																																																																																																																																																																																																																																																																																																																																																																																																																																																																																																																																																																																																																										
		36	7,000.0																																																																																																																																																																																																																																																																																																																																																																																																																																																																																																																																																																																																																																																																																																																																																																																																																																																																																																																																																																																																																																																																																																																																										
		37	7,000.0																																																																																																																																																																																																																																																																																																																																																																																																																																																																																																																																																																																																																																																																																																																																																																																																																																																																																																																																																																																																																																																																																																																																										
		38	7,000.0																																																																																																																																																																																																																																																																																																																																																																																																																																																																																																																																																																																																																																																																																																																																																																																																																																																																																																																																																																																																																																																																																																																																										
		39	7,000.0																																																																																																																																																																																																																																																																																																																																																																																																																																																																																																																																																																																																																																																																																																																																																																																																																																																																																																																																																																																																																																																																																																																																										
		40	7,000.0																																																																																																																																																																																																																																																																																																																																																																																																																																																																																																																																																																																																																																																																																																																																																																																																																																																																																																																																																																																																																																																																																																																																										
		41	7,000.0																																																																																																																																																																																																																																																																																																																																																																																																																																																																																																																																																																																																																																																																																																																																																																																																																																																																																																																																																																																																																																																																																																																																										
		42	7,000.0																																																																																																																																																																																																																																																																																																																																																																																																																																																																																																																																																																																																																																																																																																																																																																																																																																																																																																																																																																																																																																																																																																																																										
		43	7,000.0																																																																																																																																																																																																																																																																																																																																																																																																																																																																																																																																																																																																																																																																																																																																																																																																																																																																																																																																																																																																																																																																																																																																										
		44	7,000.0																																																																																																																																																																																																																																																																																																																																																																																																																																																																																																																																																																																																																																																																																																																																																																																																																																																																																																																																																																																																																																																																																																																																										
		45	7,000.0																																																																																																																																																																																																																																																																																																																																																																																																																																																																																																																																																																																																																																																																																																																																																																																																																																																																																																																																																																																																																																																																																																																																										
		46	7,000.0																																																																																																																																																																																																																																																																																																																																																																																																																																																																																																																																																																																																																																																																																																																																																																																																																																																																																																																																																																																																																																																																																																																																										
		47	7,000.0																																																																																																																																																																																																																																																																																																																																																																																																																																																																																																																																																																																																																																																																																																																																																																																																																																																																																																																																																																																																																																																																																																																																										
		48	7,000.0																																																																																																																																																																																																																																																																																																																																																																																																																																																																																																																																																																																																																																																																																																																																																																																																																																																																																																																																																																																																																																																																																																																																										
		49	7,000.0																																																																																																																																																																																																																																																																																																																																																																																																																																																																																																																																																																																																																																																																																																																																																																																																																																																																																																																																																																																																																																																																																																																																										
		50	7,000.0																																																																																																																																																																																																																																																																																																																																																																																																																																																																																																																																																																																																																																																																																																																																																																																																																																																																																																																																																																																																																																																																																																																																										
		51	7,000.0																																																																																																																																																																																																																																																																																																																																																																																																																																																																																																																																																																																																																																																																																																																																																																																																																																																																																																																																																																																																																																																																																																																																										
		52	7,000.0																																																																																																																																																																																																																																																																																																																																																																																																																																																																																																																																																																																																																																																																																																																																																																																																																																																																																																																																																																																																																																																																																																																																										
		53	7,000.0																																																																																																																																																																																																																																																																																																																																																																																																																																																																																																																																																																																																																																																																																																																																																																																																																																																																																																																																																																																																																																																																																																																																										
		54	7,000.0																																																																																																																																																																																																																																																																																																																																																																																																																																																																																																																																																																																																																																																																																																																																																																																																																																																																																																																																																																																																																																																																																																																																										
		55	7,000.0																																																																																																																																																																																																																																																																																																																																																																																																																																																																																																																																																																																																																																																																																																																																																																																																																																																																																																																																																																																																																																																																																																																																										
		56	7,000.0																																																																																																																																																																																																																																																																																																																																																																																																																																																																																																																																																																																																																																																																																																																																																																																																																																																																																																																																																																																																																																																																																																																																										
		57	7,000.0																																																																																																																																																																																																																																																																																																																																																																																																																																																																																																																																																																																																																																																																																																																																																																																																																																																																																																																																																																																																																																																																																																																																										
		58	7,000.0																																																																																																																																																																																																																																																																																																																																																																																																																																																																																																																																																																																																																																																																																																																																																																																																																																																																																																																																																																																																																																																																																																																																										
		59	7,000.0																																																																																																																																																																																																																																																																																																																																																																																																																																																																																																																																																																																																																																																																																																																																																																																																																																																																																																																																																																																																																																																																																																																																										
		60	7,000.0																																																																																																																																																																																																																																																																																																																																																																																																																																																																																																																																																																																																																																																																																																																																																																																																																																																																																																																																																																																																																																																																																																																																										
		61	7,000.0																																																																																																																																																																																																																																																																																																																																																																																																																																																																																																																																																																																																																																																																																																																																																																																																																																																																																																																																																																																																																																																																																																																																										
		62	7,000.0																																																																																																																																																																																																																																																																																																																																																																																																																																																																																																																																																																																																																																																																																																																																																																																																																																																																																																																																																																																																																																																																																																																																										
		63	7,000.0																																																																																																																																																																																																																																																																																																																																																																																																																																																																																																																																																																																																																																																																																																																																																																																																																																																																																																																																																																																																																																																																																																																																										
		64	7,000.0																																																																																																																																																																																																																																																																																																																																																																																																																																																																																																																																																																																																																																																																																																																																																																																																																																																																																																																																																																																																																																																																																																																																										
		65	7,000.0																																																																																																																																																																																																																																																																																																																																																																																																																																																																																																																																																																																																																																																																																																																																																																																																																																																																																																																																																																																																																																																																																																																																										
		66	7,000.0																																																																																																																																																																																																																																																																																																																																																																																																																																																																																																																																																																																																																																																																																																																																																																																																																																																																																																																																																																																																																																																																																																																																										
		67	7,000.0																																																																																																																																																																																																																																																																																																																																																																																																																																																																																																																																																																																																																																																																																																																																																																																																																																																																																																																																																																																																																																																																																																																																										
		68	7,000.0																																																																																																																																																																																																																																																																																																																																																																																																																																																																																																																																																																																																																																																																																																																																																																																																																																																																																																																																																																																																																																																																																																																																										
		69	7,000.0																																																																																																																																																																																																																																																																																																																																																																																																																																																																																																																																																																																																																																																																																																																																																																																																																																																																																																																																																																																																																																																																																																																																										
		70	7,000.0																																																																																																																																																																																																																																																																																																																																																																																																																																																																																																																																																																																																																																																																																																																																																																																																																																																																																																																																																																																																																																																																																																																																										
		71	7,000.0																																																																																																																																																																																																																																																																																																																																																																																																																																																																																																																																																																																																																																																																																																																																																																																																																																																																																																																																																																																																																																																																																																																																										
		72	7,000.0																																																																																																																																																																																																																																																																																																																																																																																																																																																																																																																																																																																																																																																																																																																																																																																																																																																																																																																																																																																																																																																																																																																																										
		73	7,000.0																																																																																																																																																																																																																																																																																																																																																																																																																																																																																																																																																																																																																																																																																																																																																																																																																																																																																																																																																																																																																																																																																																																																										
		74	7,000.0																																																																																																																																																																																																																																																																																																																																																																																																																																																																																																																																																																																																																																																																																																																																																																																																																																																																																																																																																																																																																																																																																																																																										
		75	7,000.0																																																																																																																																																																																																																																																																																																																																																																																																																																																																																																																																																																																																																																																																																																																																																																																																																																																																																																																																																																																																																																																																																																																																										
		76	7,000.0																																																																																																																																																																																																																																																																																																																																																																																																																																																																																																																																																																																																																																																																																																																																																																																																																																																																																																																																																																																																																																																																																																																																										
		77	7,000.0																																																																																																																																																																																																																																																																																																																																																																																																																																																																																																																																																																																																																																																																																																																																																																																																																																																																																																																																																																																																																																																																																																																																										
		78	7,000.0																																																																																																																																																																																																																																																																																																																																																																																																																																																																																																																																																																																																																																																																																																																																																																																																																																																																																																																																																																																																																																																																																																																																										
		79	7,000.0																																																																																																																																																																																																																																																																																																																																																																																																																																																																																																																																																																																																																																																																																																																																																																																																																																																																																																																																																																																																																																																																																																																																										
		80	7,000.0																																																																																																																																																																																																																																																																																																																																																																																																																																																																																																																																																																																																																																																																																																																																																																																																																																																																																																																																																																																																																																																																																																																																										
		81	7,000.0																																																																																																																																																																																																																																																																																																																																																																																																																																																																																																																																																																																																																																																																																																																																																																																																																																																																																																																																																																																																																																																																																																																																										
		82	7,000.0																																																																																																																																																																																																																																																																																																																																																																																																																																																																																																																																																																																																																																																																																																																																																																																																																																																																																																																																																																																																																																																																																																																																										
		83	7,000.0																																																																																																																																																																																																																																																																																																																																																																																																																																																																																																																																																																																																																																																																																																																																																																																																																																																																																																																																																																																																																																																																																																																																										
		84	7,000.0																																																																																																																																																																																																																																																																																																																																																																																																																																																																																																																																																																																																																																																																																																																																																																																																																																																																																																																																																																																																																																																																																																																																										
		85	7,000.0																																																																																																																																																																																																																																																																																																																																																																																																																																																																																																																																																																																																																																																																																																																																																																																																																																																																																																																																																																																																																																																																																																																																										
		86	7,000.0																																																																																																																																																																																																																																																																																																																																																																																																																																																																																																																																																																																																																																																																																																																																																																																																																																																																																																																																																																																																																																																																																																																																										
		87	7,000.0																																																																																																																																																																																																																																																																																																																																																																																																																																																																																																																																																																																																																																																																																																																																																																																																																																																																																																																																																																																																																																																																																																																																										
		88	7,000.0																																																																																																																																																																																																																																																																																																																																																																																																																																																																																																																																																																																																																																																																																																																																																																																																																																																																																																																																																																																																																																																																																																																																										